

1934

Sherwood Music School Annual Catalog 1934-1935

Sherwood Music School

Follow this and additional works at: http://digitalcommons.colum.edu/sherwood_cat

 Part of the [Music Education Commons](#), [Online and Distance Education Commons](#), [Teacher Education and Professional Development Commons](#), and the [United States History Commons](#)



This work is licensed under a [Creative Commons Attribution-Noncommercial-No Derivative Works 4.0 License](#).

Recommended Citation

Sherwood Music School. "Sherwood Music School Annual Catalog 1934-1935" (1934). Sherwood Community Music School, College Archives & Special Collections, Columbia College Chicago. http://digitalcommons.colum.edu/sherwood_cat/18

This Book is brought to you for free and open access by the Sherwood Community Music School at Digital Commons @ Columbia College Chicago. It has been accepted for inclusion in Academic Catalogs by an authorized administrator of Digital Commons @ Columbia College Chicago.

1930-31

SHERWOOD
MUSIC SCHOOL
CATALOG



SHERWOOD MUSIC SCHOOL

FINE ARTS BUILDING · 410 SOUTH MICHIGAN AVENUE · CHICAGO · ILLINOIS · U.S.A.



GEORGIA KOBER, *President*

A. J. LLEWELLYN, *Vice-President*

WALTER A. ERLEY, *General Manager*

ARTHUR WILDMAN, *Corresponding Secretary*

WILL A. HARDING, *Ext. Dept. Examiner*

WALTER KELLER, *Musical Director*

ELSE HARTMAN ARENDT, *Honorary Vice-President*

E. A. LLEWELLYN, *Secretary*

SIDNEY SILBER, *Dean*

OSCAR SKAVLAN, *Executive Secretary*

C. GEO. ANDERSON, *Bursar*

BLANCHE BENSINGER, *Student Counsellor*

Accredited Standing

The Certificates, Diplomas and Degrees of the Sherwood Music School are issued by authority of a charter granted by the State of Illinois.

The School is accredited by the Illinois Department of Education, for the training of teachers and supervisors of school music; and by the Chicago Board of Education, for the promotional credit studies of school teachers, and for the outside music study of High School students.

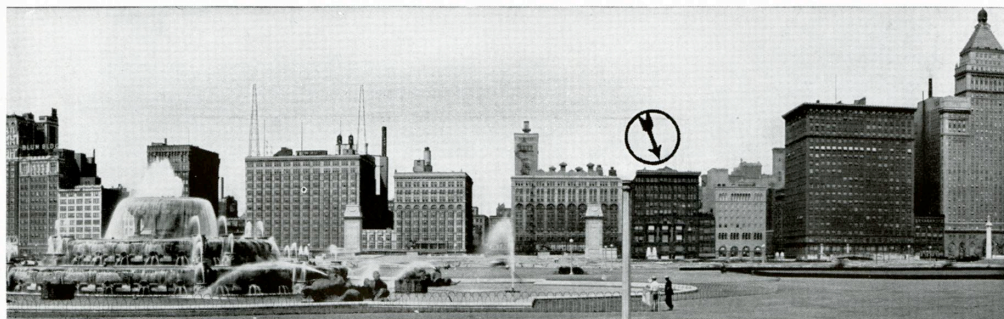
The School is also accredited by the Federal Government, for the training of non-quota foreign students. The following is quoted from the official letter of the government, notifying the School of this honor:

"It gives me pleasure to advise you that your School has been duly approved by the United States Government as an institution of learning for foreign students, in accordance with the Act of 1924. The Department of State has been notified of this action for transmission to all American consular officers, who will then be in a position to consider applications for the required non-quota student visas.

Respectfully,

G. E. TOLMAN, *Acting Commissioner General.*"

A view of Grant Park and Michigan Avenue, showing the Lake-front location of the Sherwood Music School. The arrow indicates the Fine Arts Building, home of the School. In the foreground is the famous Buckingham Memorial Fountain.





William Hall Sherwood

Copy of painting by Gasper J. Ruffolo, presented to the Sherwood Music School by Mr. and Mrs. J. W. Young. Among the eminent Chicagoans who paid tribute to Mr. Sherwood at the unveiling of this painting, on November 6, 1932, were Judges John P. McGoorty and Marcus Cavanaugh; Clarence Eddy, dean of American organists; and the leading Chicago music critics, including Glenn Dillard Gunn, Edward Moore, Karleton Hackett, Felix Borowski, Maurice Rosenfeld and Rene Devries. One of Mr. Sherwood's colleagues said on this occasion, "He was the first and the last of the great American pianists."

History

WILLIAM HALL SHERWOOD, founder of the Sherwood Music School, was born in 1854, in Lyons, New York. He received his preparatory musical training in the first conservatory organized in the United States, the Lyons Musical Academy, which was established by his father, the Rev. Lyman H. Sherwood.

For advanced instruction, he was obliged, in common with all serious students of that time, to go to Europe, where his teachers were Deppe, Kullak and Liszt.

After a sensationally successful début as soloist with the Berlin Orchestra, he returned to this country at the age of eighteen, to begin his notable career as a concert pianist and teacher.

In 1895, he organized the School which bears his name, to augment and perpetuate his efforts toward the development of musical culture in America. Since his death in 1911, the School has been headed by colleagues of Mr. Sherwood who were closely associated with him in the early years of its history, and who shared with him his musical ideals and his vision of the future usefulness of the School.

Steadily expanding its sphere of service, the Sherwood Music School has gained international recognition as a center of higher artistic learning. Its Faculty includes many of the most noted American and European artists. Its student body contains members attracted to it not only from all parts of the continent, but also from abroad. Its graduates are leaders in all phases of the musical and dramatic professions.

Scope of Service

The service rendered by the Sherwood Music School is world-wide in scope. The educational facilities which center in its Main School are extended by a chain of eleven Neighborhood Branches in Chicago; more than two thousand Branches in forty-six States; and twenty-two Branches in foreign countries.

The Main School provides specialized training for those who seek careers as

Teachers of all musical subjects, dramatic art and dancing,
Concert, radio, opera, oratorio and dramatic artists, and interpretative dancers,
Teachers and supervisors of Public School Music, Church, radio and theater organists,
Conductors, composers and arrangers, and Orchestra and band players.

In addition, the Main School offers cultural courses to develop the intellectual resources which are essential to professional success and to the richest enjoyment of life.

Beyond its purely educational service, the School assists its graduates in establishing themselves in their chosen fields of specialization. With a reputation of long standing for training competent teachers and successful artists, the School is everywhere regarded as a reliable source of talent. Consequently, its graduates are in wide demand for responsible positions and attractive engagements. Furthermore, the School is constantly in need of additional talent to take places in its own rapidly growing organization.

Calendar

The School Year comprises a Winter Season of forty weeks, and a Summer Session of eight weeks.

The Winter Season is divided into four Terms of ten weeks each, beginning, respectively, on

The second Monday in September,
The third Monday in November,
The first Monday in February, and
The third Monday in April.

Two ten-week Terms constitute one Semester, or half-year.

Technical examinations in connection with candidacy for Certificates, Diplomas and Degrees, are given throughout the second week in May. The annual Commencement Concert and awarding of credentials occurs on the third Friday evening in June.

The Summer Session opens on the last Monday in June.

New class groups are formed at the opening of each Term and at the beginning of each Summer Session. Thus, classified students who expect to enroll both for private and for class subjects, toward the requirements for a Certificate, Diploma or Degree, may register at the opening of any Term or any Summer Session. Special students, enrolling for private instruction only, may register at any time.

Student Aid

At the discretion of the Student Aid Committee, financial assistance may be granted to talented students whose means are not entirely sufficient for their education, from one or more of four sources:

1. The Sherwood Scholarships, a series of scholarships in Piano, Voice, Violin, Organ and Dramatic Art, established in honor of William H. Sherwood, founder of the School. These are full, free scholarships for private instruction in the subjects named, from artist teachers. Students desiring to enroll for full courses of both private and class instruction toward a Certificate, Diploma or Degree, are eligible for consideration.

2. Grants from the Endowment Fund to help defray tuition fees.

3. Assistance in securing general employment, including opportunities for young women students to earn board and room in private homes, and for young men students to earn their meals in restaurants and cafeterias.

4. Teaching positions in the Chicago Neighborhood Branches, after completion of special preparatory courses.

Prospective students who have financial problems to solve in connection with their plans for study are invited to ask for Financial Aid application blanks; and are assured in advance of the sympathetic co-operation of the Student Aid Committee.

Interior Views



ENTRANCE TO MAIN RECEPTION ROOM

The bronze bust of William H. Sherwood is a replica of the Sherwood bust by the noted sculptor, Lorado Taft, placed by popular subscription in the halls of the Chicago Historical Society.

THIRD FLOOR LOUNGE



INTERIOR VIEWS—Continued



A STUDIO

ENVIRONMENT is an important factor in education. Surroundings have a subtle influence in the shaping of outlook and aspirations. No pains have been spared to create in the Sherwood Music School an atmosphere of beauty and refinement, conducive to development of the highest idealism in art.

The Fine Arts Building, a large portion of which is occupied by the School, is the only Chicago building entirely given over to workers in the arts. Its main doorways bear the inscription: "All passes; Art alone endures."

The gold-bronze bust of William H. Sherwood, which stands at the entrance of the main reception room of the School, set high on a black marble pedestal, against a background of Italian red damask, provides an inspiration which lingers in the memory.

The reception rooms of the School are tastefully furnished in Seventeenth Century style.

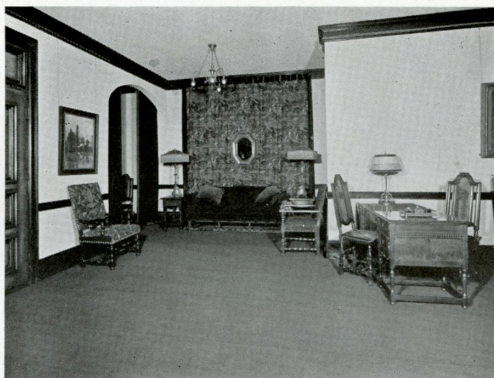
Pictorial art greets the eye everywhere: the collection of Hallow oil paintings, etchings of child life by Eileen Soper, collections of prints and silhouettes, portraits of famous musicians, and many miscellaneous paintings of notable merit.

The work of the School is carried on in a total of more than one hundred studios, classrooms, practice rooms, and lecture and recital halls.

The pianos used by the School have been purchased from the Cable Piano Company, whose Mason and Hamlin Piano is the official piano of the School, and is used in all its concerts.

The three-manual organ in the School was specially constructed for teaching and practice purposes by the Möller Organ Company.

A CORNER OF THE MAIN RECEPTION ROOM



Recitals and Concerts



SHERWOOD SYMPHONY ORCHESTRA
(Dr. P. Marinus Paulsen, Conductor)

THE SHERWOOD MUSIC SCHOOL annually gives a series of more than one hundred fifty recitals and concerts in the Sherwood Recital Hall, Curtiss Hall, and the larger auditoriums of the city. A number of these are given with full symphony orchestra.

Acquaintance with a wide range of musical literature may be formed through attendance at these recitals and concerts.

Participation in them affords valuable experience in appearing before audiences. The opportunity to appear in recitals is available to students as frequently as they can prepare themselves.

The first week in October marks the opening of the Tuesday evening series of recitals by advanced students, the Wednesday evening series by intermediate pupils and the Thursday evening series by junior pupils—all continuing throughout the season.

A series of six Sunday afternoon recitals is given every season by members of the Faculty, in Curtiss Hall.

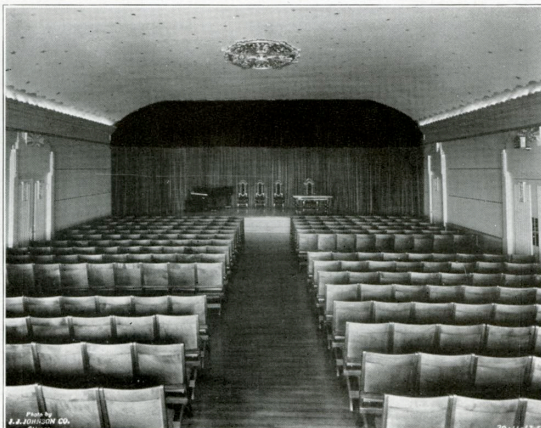
Students who are preparing for the concert field may take part in joint recitals, or give recitals by themselves. The privilege of appearing with artist instructors in two-piano presentations, or other ensemble programs, may be enjoyed frequently.

Soloists to appear with the Sherwood Symphony Orchestra in important School programs are chosen from among students with exceptional talent for performance.

Those who wish to become accompanists may acquire poise, routine, and knowledge of repertoire by playing accompaniments for School recital programs.

The Sherwood Symphony Orchestra and Sherwood Band are maintained for the benefit of advanced students of orchestra and band instruments, and for students of conducting.

CURTISS HALL



Living Accommodations



BLANCHE BENSINGER
Student Counsellor

DORMITORY FACILITIES for women students are provided through co-operation of the Eleanor Clubs, of which there are four in Chicago, all located in good residential neighborhoods, with convenient transportation to the downtown district in which the School is situated.

Endowed for their work and operated not for profit, the Eleanor Clubs provide at lowest cost all the comforts and advantages of a real home, under careful and competent supervision, with varied social contacts and a congenial environment.

Spacious parlors and living rooms, fireplaces, roof gardens, sleeping porches, radios, libraries, sewing rooms with sewing machines, and laundries with modern equipment for the use of guests are among the comforts and conveniences. Entertainments and social affairs are frequent.

The Club rates average from \$6.00 to \$8.25 weekly for a double room, and \$8.00 to \$9.50 weekly for a single room, the rates covering in each case not only rooming accommodations, but also breakfast and evening dinner on week days, and three meals on Sundays. The beds are all single, and each resident has her own closet.

For men students, and also for women students who prefer residence in private homes, the School has on file

a large list of families offering accommodations at moderate rates.

Practice Facilities

Piano practice is available at nominal rates in the Eleanor Clubs and in the studios of the School, also in private homes offering living accommodations for students. Tickets for practice on the three-manual organ of the School are sold at a rate of \$8.50 for 10 hours; or at a special rate of \$5.00 for 10 hours, if the student engages 10 or more hours weekly.

Social Life

The social life of the School is planned to provide a proper amount of recreation, and to foster worthwhile friendships. A series of six Sunday afternoon teas is given at the School each season, for students and Faculty. Artist instructors frequently entertain their students in their homes, with social and musical evenings.

Chi Delta Sigma Sorority annually elects a number of new members from the incoming group of young women students. Rho Chapter of Phi Mu Alpha Fraternity includes in its membership students from all Chicago conservatories.

It is the office of the Student Counsellor to confer with students about problems of any nature; and to advise them as to contacts which will enrich and enliven their experiences as students.

A FIRESIDE GROUP IN AN
ELEANOR CLUB



EXTERIOR VIEW OF AN
ELEANOR CLUB



Chicago

as a center of music and culture



THE CHICAGO SYMPHONY ORCHESTRA
(Dr. Frederick Stock, Conductor)

THE musical and cultural advantages of the Sherwood Music School are liberally supplemented by those of the city in which it is located.

Chicago, one of the largest of the world's great cities, is second to none as a musical Mecca.

The Chicago Symphony Orchestra annually gives, in Chicago alone, a total of one hundred thirty-one concerts. The magnificent operatic performances staged in Chicago place the city in the first rank of opera centers. Choral organizations, such as the Apollo Club and the Mendelssohn Club, present the greatest choral masterpieces. The recital appearances of renowned artists are numbered by the hundreds each year.

Students of the drama and the dance may witness in the Chicago theaters the work of the leading exponents of those arts.

Chicago is equally rich in general cultural opportunities.

The Art Institute contains one of the largest and most valuable collections of paintings in the world. The Field Museum houses a similarly extensive collection of natural history exhibits, gathered from all parts of the globe. The Chicago Public Library has not only an enormous aggregation of books, but also a Music Department which contains all of the best musical literature. In the Newberry Library may be found and studied original musical manuscripts and historical scores not to be found elsewhere, including the entire Theodore Thomas collection.

The many parks in Chicago offer ample facilities for all kinds of recreation, including tennis, golf, swimming and boating.

A SCENE FROM "TALES OF HOFFMANN"
(As presented by the Chicago Opera Company)





THE CHICAGO PUBLIC LIBRARY



FOUNTAIN OF THE GREAT LAKES
(The Art Institute)



A LAGOON IN WASHINGTON PARK

THE FIELD MUSEUM



The Faculty

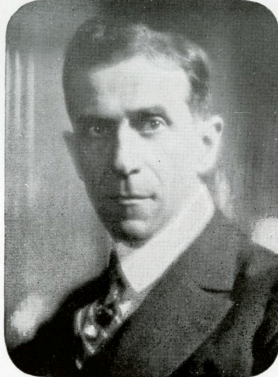


GEORGIA KOBER, President of the School, teacher of Piano. The chief assistant of Wm. H. Sherwood, she was chosen by him to be his successor. Sherwood taught her what he had learned from Liszt, Deppe and Kullak; Kappes, what he had gained from Mendelssohn, Schumann and Schneider von Wartensee (favorite pupil of Beethoven). A brilliant exponent of the modern and ultra-modern schools; a dominant figure among American concert artists.

LEO PODOLSKY, internationally known virtuoso, teacher of Piano. Born in Odessa, Russia. Pupil of George Lalewicz. Among his recent activities: A round-the-world concert tour (forty recitals in fifty-one days in the Far East); soloist with Chicago, Detroit Symphony Orchestras; recitals in New York, Boston, Chicago, other large music centers. *Chicago Tribune*: "One of the few and rare personalities in music."



ELSE HARTHAN ARENDT, Honorary Vice-President of the School, teacher of Voice. Received early training from her father, Dr. Hans Harthan, director of Imperial Conservatory, Odessa, Russia. Her later teachers: Mme. Bianchi, Mme. Rueckbeil-Hiller, Anton Dressler, Peter Raabe. Renowned as concert and oratorio singer in Europe, South America, and the United States. Soloist for Oak Park Congregational Church; fills many recital and oratorio engagements every year.



WALTER KELLER, Mus.Doc., F.A.G. O., Musical Director of the School, teacher of Organ, Theory, Composition. Pupil of Frederick Grant Gleason (Chicago); Paul Homeyer (Gewandhaus Organist); Carl Piutti (Leipzig). Eminent recitalist; organist, Fifth Church of Christ, Scientist, Chicago. Compositions for piano, organ, orchestra and voice include the *Synchronous Prelude and Fugue*, widely acclaimed, performed by Chicago Symphony Orchestra.



SIDNEY SILBER, Mus.Doc., Dean of the School, teacher of Piano. Studied piano and theory in Berlin, under Heinrich Barth and Ernest Jedliczka; later, studied three years under Leschetizky. Soloist with leading symphony orchestras in Europe and America; numerous recitals in this country and abroad. Author of *Reflections for Music Students*; has written extensively for the *Etude* and other musical magazines. Ampico recordings.

LEON ROSENBLUM, teacher of Piano. Born in Odessa, Russia. Pupil of George Lalewicz and Arthur Schnabel. Graduate, Krakow and Russian Imperial Conservatories. Formerly member of faculty of Imperial Conservatory (Ekaterinodar Caucasus) and Neues Konservatorium (Berlin). Recitals in Germany, France, England, United States. *Chicago Daily News*: "One of the most admirable influences brought to bear upon Chicago's music in many years."



THE FACULTY—Continued



THOMAS MUIR, nationally known NBC artist, teacher of Microphone Technique. Identified with broadcasting practically since its inception, and in touch with day-to-day developments in radio. Has been heard on such well known radio programs as Goodrich, Wrigley, A. & P. Gypsies, Lowney Candy Company, Pure Oil, Armour and Carnation Milk. Was for two seasons a staff artist of the Philadelphia Opera Company.



ARTHUR KRETLOW, teacher of Dance.

RAYMUND KOCH, baritone, teacher of Voice. Stellar rôles with American, Cincinnati, Festival Opera Companies; soloist with Chicago, St. Louis, Minneapolis, Cleveland Symphony Orchestras; recitals in all parts of the country; NBC radio programs. *Chicago Daily News*: "One of the most beautiful baritone voices ever heard in Chicago." *Chicago Evening American*: "He is an indispensable musical treasure."



MABELLE CHURCH VAN ALSTYNE, teacher of Dramatic Art. Gained stage experience as a member of the company of the famous Richard Mansfield. Was for five years a leading artist of the Redpath Chautauqua. Has staged religious plays in Hollywood. Previous teaching engagements: Northwestern University and Cumnook School of Oratory. Has trained many artists now successful in various branches of the dramatic profession.



MARCEL ROGER de BOUZON, baritone, teacher of Voice. Studied in University of Budapest (Doctor of Philosophy Degree); in Imperial Conservatory of Vienna, under Habock and Giampietro; in Conservatoire Internationale d'Opera in Paris, under Carre and Yancey, of Opera Comique; and under the famous Jean de Reszke. Repertoire of nine hundred songs in many languages. Has sung before royalty in London. Is reëminently a lieder singer.

THEODORA TROENDLE, teacher of Piano. Was for seven years an assistant of Fannie Bloomfield Zeisler. Soloist with St. Louis, Minneapolis, Indianapolis, Milwaukee and Chicago Women's Symphony Orchestras; has given recitals in many of the largest music centers. Is distinguished also as a composer. Her studies under Mme. Zeisler enable her to impart to students the principles underlying the success of that great artist.

CHARLES ESPENSHADE, teacher of Public School Music. Studied under Rollo Maitland, Walter Dietrich, Fredric Hahn, Eugene Marks; normal and literary courses in Columbia University; spent two seasons in Berlin, studying piano with Xaver Scharwenka and conducting with Bruno Kittle. For the past fourteen years, Supervisor of Music in Englewood High School, Chicago; for the past ten years, organist and choir-master of St. Paul's Church, Chicago.

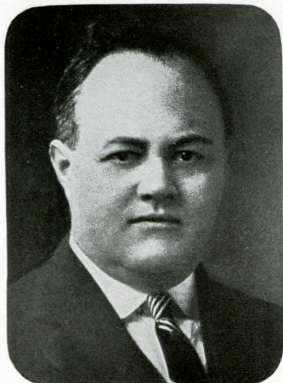


THE FACULTY—Conti



EDWIN STANLEY SEDER, F.A.G.O., teacher of Piano, Organ, Ear Training, Accompanying and Choral Conducting. Was trained in piano by a pupil of Liszt; in organ, by Mark Andrews. Was for four years Director of the College of Fine Arts, University of New Mexico. Has been for past fifteen years organist and choirmaster of Oak Park Congregational Church. One of the most active of American organ recitalists.

WILL A. HARDING, Extension Department Examiner and teacher of Harmony and Counterpoint. Pupil of Scharwenka, Clarkson, Evans and Keller; Master's Degree graduate of the Sherwood Music School. His qualifications include not only intensive training, but also varied and highly successful teaching experience. In addition to other duties, Mr. Harding is in charge of special Normal Classes for Affiliated Teachers in centers outside Chicago.



TINA MAE HAINES, teacher of Organ, History and Appreciation of Music. Pupil of Alexander Guilmant (Paris). Organist of St. James Methodist Church, Chicago. Has lectured for years on programs of Chicago Symphony Orchestra and other musical subjects. Her lectures are noted for attractive style of presentation, in which the serious and idealistic are spiced with the humorous.



SIDNEY SILBER, Mus.Doc., Dean of the School, teacher of Piano. Studied piano and theory in Berlin, under Heinrich Barth and Ernest Jedliczka; later, studied three years under Leschetizky. Soloist with leading symphony orchestras in Europe and America; numerous recitals in this country and abroad. Author of *Reflections for Music Students*; has written extensively for the *Etude* and other musical magazines. Ampico recordings.

HELEN BICKERTON, well known concert and oratorio soprano, teacher of Voice. Coached under Italian and French conductors of opera in Europe. Has appeared as soloist with Chicago Symphony Orchestra, and with Chicago Bach Chorus. Soloist, First Congregational Church, Evanston. Took leading rôle in gala production of *Pilgrim's Progress*, given in honor of the composer, Edgar Stillman Kelley. Member of the American Quartette.



LILLIAN LUCAS, teacher of Public School Music, District Supervisor in Chicago Public Schools, superintending the music instruction in more than forty schools. Her instruction covers the training of child and adolescent voices; modern song literature for school use; comparative methods and available materials; sight singing, ear training and dictation; and the teaching of appreciation of music in the public schools.



THE FACULTY—Continued



THOMAS MUIR, nationally known NBC artist, teacher of Microphone Technique. Identified with broadcasting practically since its inception, and in touch with day-to-day developments in radio. Has been heard on such well known radio programs as Goodrich, Wrigley, A. & P. Gypsies, Lowney Candy Company, Pure Oil, Armour and Carnation Milk. Was for two seasons a staff artist of the Philadelphia Opera Company.

ARTHUR KRETLOW, teacher of Dancing, has trained numerous stars of the stage, has coached Broadway hits, has arranged and directed dances for the Folies Bergere in Paris. Past President of the Chicago Association of Dancing Masters, Director of the Dancing Masters of America. An exponent of all phases of his art, his instruction covers ballet, tap, acrobatic, character and ballroom dancing. His articles on "limbering" and on acrobatic dancing are well known and widely read.



VERA MIROVA, teacher of Dancing. Internationally known as an interpretative dancer, particularly noted for her interpretation of authentic Oriental dances, which she studied in the Far East. Was engaged during her first season in America for the productions of Adolph Bolm, winning immediate and sensational success. Gives several dance recitals in Chicago every year, and appears regularly in other large cities.



ELIZABETH KELLER, teacher of Piano, also in charge of the Piano Normal Class which is a prominent feature of the Piano Department curriculum. Master's Degree graduate of the School. Her uniformly successful teaching experience has covered all grades. In the capacity of Normal Instructor, she supervises all practice teaching and observation of young teachers in the Junior Department. A member of the faculty for upward of fifteen years.



FRANK SYKORA, teacher of Violoncello. Born in Russia; began study at age of four; appeared as soloist with orchestras at age of nine. Studied in Imperial Conservatory (Kiev, Russia) and Prague Conservatory. Was for four years musical director of Polish Theater, Kiev. Since coming to America, has filled engagements with Cincinnati Symphony Orchestra, Little Cincinnati Symphony Orchestra, American Opera Company and National Broadcasting Company.



MILDRED FITZPATRICK, teacher of Theater and Radio Organ. Pupil of Dr. Louis Falk and Dr. J. Lewis Browne. Has held positions in a number of the largest motion picture theaters in Chicago, including five years at the Pantheon; and in Chicago radio stations. Has trained a great number of highly successful theater and radio organists; her guidance is invaluable to those ambitious to enter the field in which she has won such distinction.



THE FACULTY—Continued



CHARLOTTE A. KOONS
PIANO



FREDERIC YOUNGFELT
PIANO AND THEORY



LORETTA LIEDELL
VOICE



IRENE LAMB KEYSER
PIANO



LEAH ELWARD
PIANO



HAZEL HARRIS
VOICE



MARION SCHROEDER
VOICE



KATHERINE TOWNSEND
PIANO



FRANCIS KEYSER
PIANO



GERTRUDE LEE
PIANO



IRMA ORSER
PIANO



CLEM LEMING
PIANO



ALVERNA STETZLER
PIANO



FLORENCE ARMSTRONG
VIOLIN



MILTON V. CASE
PIANO



HELEN I. LYNCH
PIANO



BLOSSOM SEWELL
PIANO



LEWIS EASH
PIANO



LUELLA FORREST
PIANO



ANGELA LEWIS
PIANO

THE FACULTY—Continued



HATTIE FISCHER
PIANO



LOULA JAY SAMSON
DRAMATIC ART



RUDOLPH BAUMHEIER
CELLO



MILTON B. COOPER
WIND INSTRUMENTS



ROBERTA SAVLER
PIANO



WALTER BAUER
PIANO



MURIEL BARNES
DRAMATIC ART



BEATRICE WAGONER
PIANO



ALMA HUTH
DRAMATIC ART



PAUL JAHNKE
WIND INSTRUMENTS



NICOLAS SERRA
WIND INSTRUMENTS



MURIEL VAN WAGONER
PIANO



LETTIE BALL
PIANO



MABEL DE VRY
PIANO



SANTO SANTUCCI
PIANO ACCORDION



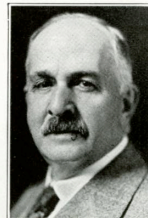
FLORENCE KELLERMAN
PIANO



HOWARD FREIWALD
WIND INSTRUMENTS



WILLIAM COHOLAN
BANJO



EMIL H. KOPP
WIND INSTRUMENTS



ELIZABETH THINN
PIANO

General Information

Scope of Courses

THE CURRICULUM of the School has been planned to give the student

First: The utmost in training for his profession.

Second: A sense of social service.

Third: An appreciation of the cultural side of life.

Fourth: A means of earning a satisfactory livelihood.

A complete list of the subjects in which the School gives instruction appears on Pages 21 and 22. Besides the specialized courses in Music, Dramatic Art and Dancing, the curriculum includes subjects intended to form a general educational background.

The courses in general educational subjects are unique in that they are designed especially to fit the needs of students of Music, Dramatic Art and Dancing; and they represent a type of instruction not elsewhere available.

The School welcomes to its student body both those who wish to prepare for careers and those who are interested in its courses only for their cultural values.

The School Year

The School Year is divided into four ten-week Terms, two Terms comprising one Semester. There is also a Summer Session of eight weeks. (See Calendar on Page 3.)

Classified and Special Students

Students may enter the School as classified students, working for Certificates, Diplomas or Degrees; or as special students, registering only for those courses which are of particular interest to them.

Classified students may enter at the opening date of any Term or Summer Session, as new classes are organized on all such dates. Special students may enter at any time.

Entrance Requirements

Students who wish to enter the School as candidates for Degrees are required to present transcripts showing the completion of fifteen units of study in an accredited High School, or the equivalent.

The following distribution of units is recommended: 3 units in English; 2 in Foreign Languages; 1 in Mathematics; 1 in History or Science; 5 electives chosen from general academic subjects; and 3 electives chosen without restriction (these may be all in Music, or in general academic subjects, or may include such special subjects as Bookkeeping, Typewriting, Domestic Science, Manual Training, etc.).

Deficiencies in High School credits must be made up during the first year of study.

In all advanced music courses, the ability to perform acceptably, standard material of the elementary and in-

termediate grades, is required for entrance as a candidate for advanced credentials. Deficiencies in this requirement may be made up by study in the Junior and Intermediate Departments of the School.

When requested, the Corresponding Secretary will provide a questionnaire upon which the student may give details concerning his previous studies in music; upon the basis of this, an opinion will be given as to whether they have been sufficient to satisfy the music requirements for entrance to advanced courses.

Unit of Credit

The unit of credit employed by the School is the Semester Hour, granted for

Two fifty-minute class recitations weekly for one term of ten weeks, with four hours of outside preparation weekly, in classes requiring such preparation, as for example, Harmony; or for

Four fifty-minute class recitations weekly for one term of ten weeks, in classes requiring little or no outside preparation, as for example, Ear Training; or for

One half-hour private lesson weekly in Applied Music, Dramatic Art or Dancing for one term of ten weeks, with adequate practice and satisfactory progress.

Departments

Pages 18, 19 and 20 show the semester hour credits required in various subjects for the Certificates, Diplomas and Degrees issued by the School in the following Departments of Instruction: Piano, Violin, Voice, Organ, Public School Music, Conducting and Instrumental Supervising, and Dramatic Art.

Students who desire to earn credentials with a major in 'Cello or Wind Instruments, may do so by meeting the requirements outlined for the Violin Department, substituting for Violin the instrument or instruments of their choice.

Courses leading to credentials with a major in Theory and Composition, or in Dancing, will be outlined for individual prospective students upon request.

Students who are not financially able to register for full courses of study may register for partial courses, and gradually fulfill the requirements for the credentials desired.

Minimum Requirements for Credentials

The minimum numbers of semester hour credits required for various credentials are as follows: For a Normal Certificate, 28; for a Teacher's Certificate, or Certificate of Advanced Proficiency, 60; for a Teacher's Diploma, or Junior Diploma, 90; for the Bachelor's Degree, 120; for the Master's Degree, 150.

GENERAL INFORMATION—Continued

A minimum of one full Winter Season, or four six-week Summer Sessions of resident study is required for any Degree. The latter requirement, however, may be met by two twelve-week periods of summer study. Summer courses toward Degrees must include studies earning a total of not less than six semester hour credits for a six-week period.

Recognition of Previous Advanced Studies

Students may prove themselves entitled to advanced standing by presenting transcripts from other standard institutions of higher learning previously attended; or by passing examinations to demonstrate proficiency. Not more than 90 semester hours of advanced standing are applicable toward requirements for a Bachelor's Degree.

Length of Periods

Private lessons are thirty or sixty minutes in length. Class periods are fifty minutes in length.

Examinations

All students must give evidence of the satisfactory completion of their studies by examination. The School reserves the right to withhold its credentials from students who fail to make a satisfactory showing in examinations.

Recitals, Concerts, Opera

Students are expected, as a vital part of their education, to attend the recitals and concerts of the School; and to attend outside recitals, concerts and operatic productions. Students majoring in an Applied Music subject are also expected to appear frequently in School recitals.

Rules and Regulations

Students may register at any time, but are not regularly accepted for less than one term of ten weeks. During the Winter Season, candidates for Degrees are not allowed credit for less than a full semester of study.

Tuition is payable by the term, strictly in advance, and is not subject to refund under any circumstances.

A matriculation fee of \$5.00 is charged new advanced students, and is not refunded.

In case of illness, and provided that the School has been notified, extension of time will be given so that private lessons missed on that account may be made up. Private lessons missed must be made up within the term. Class lessons missed cannot be made up.

Grade deductions are made for absence from classes. Frequent absences result in loss of credit for the term's work.

Students cannot be transferred from the class of one artist teacher to that of another, except with the consent of the Executive Secretary, and only at the end of a regular term. Except at the beginning of the school year, a fee of \$2.50 is charged for such transfers, to cover the cost of making new records.

Each student is entitled to receive one transcript of his record on request, free of charge. Additional transcripts will be provided for a fee of \$1.00 each.

No teacher is permitted to give lessons to any student away from the School, or not registered in the School, except by permission from the General Manager.

Students must be prompt for lesson periods, in order to receive the full time allotted.

The Sherwood Music School reserves the right to withhold its credentials from students who fail to show satisfactory accomplishment and proficiency; and to withdraw any class for lack of sufficient registration.

Credentials and transcripts of credit are not issued to students unless they have paid in full all fees due the School.

No credential is issued to a student unless he has either received from the School any and all credentials preceding in order of advancement the credential desired, or has received their acceptable equivalents from other institutions.

Students may receive their Certificates, Diplomas, and Degrees *cum laude* (with honors) by meeting the requirements of the Honor Roll System used by the School. These requirements are: 1. Punctuality in keeping lesson and class appointments. 2. Regularity of attendance. 3. Attentiveness during lesson and class periods. 4. A high grade of scholarship. Each student is graded, term by term, on each subject, with reference to Honor Roll standing, taking into consideration each of the four points named. A further condition is that the student must participate in some of the School recitals.

Tuition Fees

Although the caliber of the teaching staff of the Sherwood Music School ranks with that of any other leading conservatory, tuition rates are surprisingly low. This is because the School is only partly dependent upon tuition receipts for its income, the balance being derived from other sources.

The rates of tuition payable in the various Departments of instruction are published in departmental bulletins, mailed upon request.

Alumni Association

The SHERWOOD MUSIC SCHOOL ALUMNI ASSOCIATION (Inc.), founded in 1922, includes in its active membership former pupils of William H. Sherwood; students who have received credentials from the Sherwood Music School; and graduates of the Extension Branches of the School. The officers of the Sherwood Music School are honorary members of the Association. Employees of the Sherwood Music School are admitted to associate membership.

Sherwood News

The SHERWOOD MUSIC SCHOOL NEWS is the official news publication of the School, containing information about activities in the School and its Branches, and items of general musical interest.

REQUIREMENTS FOR CREDENTIALS WITH *Piano, Violin, Voice, or Organ* AS A MAJOR SUBJECT

Semester Hour Credits required for a

Normal Certificate:

	PIANO	VIOLIN	VOICE	ORGAN
Applied Music	8	8	8	8
General Theory	4	4	4	4
Harmony I	4	4	4	4
English I	4	4	4	4
Survey of World History	4	4	4	4
Piano Normal Class I (with Observation) ...	4			
Violin Normal Class		4		
French			4	
Elective				4

Total 28

Additional Semester Hour Credits required for a **Teacher's Certificate, or Certificate of Advanced Proficiency:**

Applied Music	8	8	8	8
Ear Training, Sight Singing and Dictation ...	4	4	4	4
Harmony II	4	4	4	4
History of Music	4	4	4	4
English II	4	4	4	4
Piano Normal Class II (with Practice Teaching)	4			
Elective(s)		4	4	8
Italian				4

Total 32

Additional Semester Hour Credits required for a **Teacher's Diploma, or Junior Diploma:**

Applied Music	8	8	8	8
Harmony III	4	4	4	4
Counterpoint	4	4	4	4
Form and Analysis, and Appreciation	4	4	4	4
Survey of World Literature	4	4	4	4
Ensemble Playing	4	4		4
Ensemble Singing			4	
Elective	4	4		4
German				4

Total 32

Additional Semester Hour Credits required for the **Bachelor of Music Degree:**

Applied Music	8	8	8	8
Double Counterpoint, Canon and Fugue ...	4	4	4	4
Composition and Orchestration	4	4	4	4
Survey of Social Sciences	4	4	4	4
Physics: The Dynamics of Musical Sound ..	4	4	4	4
Elective	4	4	4	4

Total 28

Additional Semester Hour Credits required for the **Master of Music Degree:**

Applied Music	8	8	8	8
Advanced Composition	4	4	4	4
Advanced Orchestration	4	4	4	4
Artist's Repertoire	4	4	4	4
Thesis	4	4	4	4
Electives	6	6	6	6

Total 30

Explanatory Notes

The columns of figures show vertically the semester hour credits required for credentials in Piano, Violin, Voice and Organ, respectively.

These courses are so planned that a student carrying a full course of study may meet the requirements for each successive credential in four ten-week terms.

The term "Applied Music," refers to private study of the major subject, Piano, Violin, Voice or Organ, as the case may be. Two half-hour lessons weekly over a period of four ten-week terms, with adequate practice and satisfactory progress, are required for earning the eight semester hour credits specified for each year.

All other subjects are covered by classes which earn four semester hour credits in four ten-week terms.

Students who are financially unable to enroll for full courses may enroll for any number of the required classes, with possibly only one half-hour of private instruction weekly in the major subject, and thus gradually fulfill the requirements for any desired credential.

Special Normal Classes are provided for Piano and Violin students who wish to prepare to teach; these Classes, however, are elective, and a corresponding number of credits in other musical subjects may be substituted for them.

Students of Voice and Organ who wish to prepare to teach are given Normal training as a part of their private instruction in those subjects.

If, by the wish of the student, Electives are substituted for Normal training, no Normal Certificate is issued, but a Certificate of Advanced Proficiency is issued at the end of the second year, and a Junior Diploma at the end of the third year.

The Electives indicated at various points may consist of any subjects taught by the School. All students are recommended to consider Public School Music Methods I and II in this connection, in view of the fact that they may at some time have opportunity to supplement other musical activities by work in the public schools, in which case they will already have a foundation for such work.

Students of Violin and Voice are required to devote some Electives to the study of Piano, unless they have already acquired ability to play piano music of the elementary and intermediate grades.

Membership in the Sherwood Symphony Orchestra (no tuition charge) is required of Violin students who are prepared for it.

The Outlines of Instruction on Pages 21 and 22 provide information concerning the ground covered in the subjects listed in these tables of requirements.

REQUIREMENTS FOR CREDENTIALS WITH A MAJOR IN

Public School Music, or Conducting

AND INSTRUMENTAL SUPERVISING

Semester Hour Credits to be earned during first year of study:	P. S. M.	COND.
Applied Music	12	12
Harmony I	4	4
History of Music	4	4
Observation and Reports	2	2
Rhetoric and Composition (College Credit) ..	6	6
Public School Music Methods I	4	
Conducting Elective		4

Total 32

Additional Semester Hour Credits required for a **Teacher's Certificate**:

Applied Music	12	12
Ear Training, Sight Singing and Dictation ..	4	4
Harmony II	4	4
Practice Teaching	2	2
Educational Psychology (College Credit)	3	3
Principles and Methods of Teaching (College Credit)	3	3
Public School Music Methods II	4	
Conducting Elective		4

Total 32

Additional Semester Hour Credits required for a **Teacher's Diploma**:

Applied Music	8	8
Harmony III	4	4
Counterpoint	4	4
Form and Analysis, and Appreciation	4	4
Academic Elective (College Credit)	3	3
Educational Elective (College Credit)	3	3
Conducting Elective	4	4

Total 30

Additional Semester Hour Credits required for the **Bachelor of Music Education Degree**:

Applied Music	8	8
Double Counterpoint, Canon and Fugue	4	4
Educational Electives (College Credit)	6	6
Academic Electives (College Credit)	6	6
Advanced Public School Music Methods I	4	
Conducting Elective		4

Total 28

Additional Semester Hour Credits required for the **Master of Music Education Degree**:

Applied Music	8	8
Thesis	4	4
Educational Electives (College Credit)	6	6
Academic Elective (College Credit)	3	3
Advanced Public School Music Methods II ..	4	
Conducting Elective		4
Electives	5	5

Total 30

Explanatory Notes

The columns of figures show vertically the semester hour credits required for credentials in Public School Music, or in Conducting and Instrumental Supervising, respectively.

The Public School Music courses provide specialized preparation for teaching and supervising vocal work in public schools, and for Choral Conducting; with generalized training for Band and Orchestra work. The courses in Conducting and Instrumental Supervising are for those who wish to specialize in Band and Orchestra work in the public schools.

Provision is made, however, for any student to acquire broad preparation in both phases of school music. The Public School Music courses admit an Elective in Conducting in the third year; and students of Conducting and Instrumental Supervising may substitute for any Conducting Elective a course in Public School Music Methods.

In choosing Electives in Conducting, students majoring in Conducting and Instrumental Supervising may specialize in any phase of the subject, such as Band Conducting, or Orchestra Conducting, or Choral Conducting; or may diversify their choice, so as to obtain a knowledge of more than one of these subjects.

The term "Applied Music" refers to private study of Piano, Voice, or instruments of the Band or Orchestra. Three half-hour lessons weekly over a period of four ten-week terms, with adequate practice and satisfactory progress, are required for earning the twelve semester hour credits specified during each of the first two years. Two half-hour lessons weekly are required in the succeeding years.

During the first two years, Public School Music students are required to take two half-hour lessons weekly in Piano, and one half-hour weekly in Voice; or vice versa; or one half-hour in Piano, one half-hour in Voice, and one half-hour in an instrument of the Band or Orchestra.

Students of Conducting and Instrumental Supervising may elect any subjects in Applied Music, but are recommended to learn to play one Band or Orchestra instrument with proficiency and to form an acquaintance with all such instruments.

Classes marked "College Credit" are to be taken in the Downtown College of the University of Chicago, or in Lewis Institute, both of which are located conveniently near the School; the tuition cost is moderate. All other class instruction is provided by the School, in classes earning four semester hour credits in four ten-week terms.

Students carrying full courses complete each successive division in four ten-week terms. The Outlines of Instruction on Pages 21 and 22 provide information concerning the ground covered in the subjects listed in these tables of requirements.

REQUIREMENTS FOR CREDENTIALS WITH

Dramatic Art

AS A MAJOR SUBJECT

Semester Hour Credits required for a

Normal Certificate:

Dramatic Art	8
Fundamentals of Expression I.....	4
Play Production I.....	4
English I	4
Survey of World History.....	4
Elective	4
Total	28

Additional Semester Hour Credits required for a

Teacher's Certificate:

Dramatic Art	8
Fundamentals of Expression II.....	4
Play Production II.....	4
English II	4
Survey of World Literature	4
Electives	8
Total	32

Additional Semester Hour Credits required for a

Teacher's Diploma:

Dramatic Art	8
Dramatic Interpretation I.....	4
Play Production III	4
Seminar I: American and European Dramatic Literature	4
Survey of Social Sciences.....	4
Electives	8
Total	32

Additional Semester Hour Credits required for the

Bachelor of Oratory Degree:

Dramatic Art	8
Dramatic Interpretation II	4
Play Production IV.....	4
Seminar II: American and European Dramatic Literature	4
Electives	8
Total	28

Additional Semester Hour Credits required for the

Master of Oratory Degree:

Dramatic Art	8
Dramatic Interpretation III.....	4
Play Production V.....	4
Seminar III: American and European Dramatic Literature	4
Thesis	4
Electives	6
Total	30

Explanatory Notes

These courses are so planned that a student carrying a full course of study may meet the requirements for each successive credential in four ten-week terms.

Private instruction in Dramatic Art is the foundation of the training of each student. Two half-hour lessons weekly over a period of four ten-week terms, with adequate preparation and satisfactory progress, are required for earning the eight semester hour credits allotted to such private instruction in each year.

All other subjects are covered by classes which earn four semester hour credits in four ten-week terms.

Students who are financially unable to enroll for full courses may enroll for any number of the required classes, with possibly only one half-hour of private instruction weekly, and thus gradually fulfill the requirements for any desired credential.

Voice, Dancing, Piano and Foreign Languages are specially recommended to students in the Dramatic Art Department, in connection with their choice of Electives; but they are permitted to choose as Electives any subjects in the curriculum of the School.

The Outlines of Private and Class Instruction on Pages 21 and 22, provide information concerning the ground covered in the subjects listed in this table of requirements.

The courses leading to credentials are of such breadth as to fit the student for any phase of the dramatic profession: public performance, coaching, or teaching. These courses seek primarily the development of the individual through highly specialized training which combines the academic with the artistic. They aim to stimulate the imagination; to awaken the creative as well as the interpretative faculties; to make of latent ability an executive force which will enable the student to meet successfully the demands of a professional career. Guidance is given in methods of practice which most quickly overcome personal limitations.

Frequent participation in plays and recitals is an important part of the training of the Dramatic Art Department. Through the Play Production Classes, numerous opportunities are provided for obtaining this invaluable experience under expert supervision and the most favorable conditions. An outlet for the originality of the student is afforded by the work in costuming, scenery designing and lighting which naturally grows out of the stage productions of the Department.

Supervised practice teaching and practice coaching are important features of all courses beyond the first year.

Students who wish to become radio artists are recommended to add to the general preparatory training given them in the Dramatic Art Department, at least a short course in Microphone Technique. (See Page 22.)

Outlines of Instruction

Private Instruction

THE SUBJECTS in which private instruction is offered include Piano, Violin, Voice, Church and Concert Organ, Radio and Theater Organ, 'Cello, Wind Instruments, Dramatic Art, Dancing, Microphone Technique, Banjo and similar stringed instruments, Drums, Xylophone, and Piano Accordion. In addition, private instruction may be engaged to cover any subject regularly taught in classes.

Broadly described, the underlying aims of the private instruction given by the School are to build a solid foundation of technical proficiency based upon the latest accepted principles; to unfold latent interpretative powers; to equip the student with a repertoire which will be useful either in teaching or in public performance; and to prepare him to make professional use of his acquired ability, to the best advantage.

Class Instruction

The following outlines show concisely the nature of the instruction given in the various Classes conducted by the School. For convenient reference, these Classes are listed alphabetically. The list includes not only those which figure in the requirements for credentials, but also others which are elective.

Classes requiring outside preparation meet twice weekly for fifty-minute sessions, and earn one semester hour credit in one term of ten weeks. Classes requiring little or no outside preparation meet four times weekly for fifty-minute sessions, likewise earning one semester hour credit in one term of ten weeks.

Accompanying. EDWIN STANLEY SEDER. Intended to develop the ability to think, feel and play in perfect unison with the soloist. Attention is given to stage deportment; sight reading; transposition; modulation; introductions; interludes; counter-melodies; a study of song-poem, melodic line and accompaniment; and to a survey of the literature with which the accompanist must be familiar.

Artist's Repertoire. The Piano, Violin, Voice and Organ Departments maintain separate Classes in Artist's Repertoire, which are conducted in rotation by the artist teachers of these Departments. Members are called upon to present compositions which they have prepared, for the discussion and criticism of the superintending teacher and fellow members of the Class.

Bach Class for Voice Students. ELSE HARTHAN ARENDT. Members of this Class gain an intimate acquaintance with the choral music of Johann Sebastian Bach, through studying and singing it under the expert direction of Mme. Arendt.

Class Method of Teaching Piano. IRENE LAMB KEYSER. How to teach young beginning piano pupils by the modern class method.

Composition and Orchestration, Advanced Composition, Advanced Orchestration. WALTER KELLER and P. MARINUS PAULSEN. Original composition, beginning with simple forms and advancing gradually to the sonata, the symphony, the symphonic poem, the double

fugue, and similar projects in composition. The principles of orchestration are applied to the student's own work.

Conducting. P. MARINUS PAULSEN, EDWARD MELTZER, EDWIN STANLEY SEDER. The Classes in Conducting comprise three divisions: Orchestra Conducting, Band Conducting, and Choral Conducting. In each division, there are five Classes, one for each of the five years leading to the Master of Music Degree. These Classes provide carefully graduated instruction in every phase of the art of conducting: Baton technic, rehearsal methods, interpretation, repertoire, arranging music for performance by orchestras, bands and choral bodies, and all the problems peculiar to each branch of the subject.

Counterpoint. WALTER KELLER. Strict and free counterpoint. Starting with simple two-part counterpoint, this Class takes the student to the point where he can construct interesting three- and four-part polyphonic inventions.

Dancing. ARTHUR KRETLOW and VERA MIROVA. Ballet, interpretative, tap, character, acrobatic and ballroom dancing. Classes are offered for those who are interested in Dancing as a form of physical culture and as a diversion, as well as for those who wish to prepare to teach the subject or to appear on the stage.

Double Counterpoint, Canon and Fugue. WALTER KELLER. The student is taught to write counterpoint so that its voices may be subjected to inversion. This leads naturally into Canon and Fugue, both of which are treated thoroughly, with creative exercises required throughout.

Dramatic Interpretation, I, II, III. MABELLE CHURCH VAN ALSTYNE. These Classes form a sequel to the Classes in the Fundamentals of Expression, outlined on Page 22. In general, the subjects are the same, but the treatment of them is more advanced, and at this stage of the student's progress, the emphasis is placed upon practice rather than theory.

Ear Training. EDWIN STANLEY SEDER. This Class develops the ability to sing any melody at sight, and to put dictated musical exercises into written form.

English, I, II. The principles of rhetoric and composition. Choice of words, sentence structure, paragraph building. Exposition, narration, description and argumentation. In order that the required written exercises may have greatest practical value, they are frequently related to musical and dramatic topics.

Ensemble Playing. P. MARINUS PAULSEN. The playing of chamber music, with different combinations of instruments.

Ensemble Singing. This Class ranges through the whole realm of choral literature, sacred and secular.

Form and Analysis, and Appreciation. TINA MAE HAINES. Analysis of the larger forms. Survey of musical masterpieces from the appreciative viewpoint.

French. Vocabulary, pronunciation, grammar, diction. Exercises in conversing and in writing.

OUTLINES OF INSTRUCTION—Continued

CLASS INSTRUCTION—Continued

Fundamentals of Expression, I, II. MABELLE CHURCH VAN ALSTYNE. These Classes cover the basic elements of Dramatic Art. The body as an instrument of expression. Freeing, coördinating and directing the agents of expression. Poise. The walk. Lines and planes of gesture. Pantomime as drama in outline. Voice development, breath control, vowel formation, consonantal articulation, the melody of speech. Platform deportment. Presence, gait, bearing. Establishment of mood. Recognition of audience. Acknowledgment of applause. Literary interpretation. Stage technique. Ease and naturalness of action. Dramatic value of space. The art of make-up on the portraiture theory. Impersonation, subjective analysis of character, classification of types, study of impulsive, instinctive and calculated action. Dialects, knowledge of original tongue, varying methods of delivery.

General Theory. ELIZABETH KELLER and EDWIN STANLEY SEDER. The rudiments of musical theory, including elementary form and analysis, combined with elementary ear training, sight singing and dictation.

German. Vocabulary, pronunciation, grammar, diction. Exercises in conversing and in writing.

Harmony, I, II, III. WALTER KELLER and WILL A. HARDING. The instruction begins with the rules of voice leading, and progresses through the harmonizing of melodies and figured basses, the use of chords of the seventh, chromatic chords, chords of the ninth, harmonic ornaments and similar subjects, with special study of keyboard harmony.

History of Music. TINE MAE HAINES. In this Class, the development of the art of music is traced from its beginnings to the era of the modernists and ultra-modernists.

Italian. Vocabulary, pronunciation, grammar, diction. Exercises in conversing and in writing.

Lieder Class. ELSE HARTHAN ARENDT. This Class covers not only the German *lieder* but the songs of other nations as well, from the appreciative and interpretative standpoints.

Microphone Technique. THOMAS MUIR. The microphone and amplifying apparatus used in this Class are of the most modern design, so that the student's performance may be heard by the instructor exactly as it would sound if broadcast, and criticized accordingly. The student is taught how to overcome the peculiar problems inherent in the work of the radio artist, and how to project his interpretation into the microphone in such way that it is carried without loss of value to the listener.

Personal Development. MABELLE CHURCH VAN ALSTYNE. This is a general self-improvement Class, given to the study of self-expression through speech, bearing and gesture; enunciation; diction; good English; conversational ability; definition and approach of personal objectives; and many other matters which have a vital relation to success in life.

Physics: The Dynamics of Musical Sound. WALTER A. ERLEY. After presenting a foundational course in acoustics and the laws of sound, this Class takes up

their exemplification in musical instruments, in the human voice and ear, and in the acoustical properties of buildings.

Piano Normal Class. ELIZABETH KELLER. The Piano Normal Class is based upon the New Printed Text of the Sherwood Music School, and shows how this Text may be used to best advantage with pupils of different ages and types of musical mentality. In the first year, a part of the time is given to observation of demonstration teaching. Practice teaching is an important feature of the second year course. Throughout, much time is given to the study of teaching repertoire. (Students who do not have the Text may procure it at the time of registration.)

Play Production, I, II, III, IV, V. MABELLE CHURCH VAN ALSTYNE. The farce, comedy, melodrama and tragedy rehearsed and carried to public performances with costumes, make-up, scenery and lighting; and with the students as players.

Public School Music Methods, I, II; Advanced Public School Music Methods, I, II. CHARLES ESPENSHADE and LILLIAN LUCAS. Comparative methods and materials for use in the teaching and supervising of music in the Grade and High Schools. Training of child and adolescent voices. The teaching of appreciation. Conducting. Tests and measurements. Music material for festivals and special occasions. In the Advanced Public School Music Methods Classes, much attention is given to composing and arranging music for school groups.

Seminars, I, II, III: American and European Dramatic Literature. MABELLE CHURCH VAN ALSTYNE. Intensive study of the works of the most important American and European dramatists.

Stage Deportment. MABELLE CHURCH VAN ALSTYNE. This Class is intended to provide training for students of music, which will enhance the success of their public appearances. Among the subjects considered are poise, bearing, entrances, exits, acknowledgment of applause, and the dramatization of the individual and his interpretation.

Surveys: World History, World Literature, Social Sciences. While the titles of these Classes leave little to be explained as to their content, it is important to understand their place in the curriculum. The student of Music or Dramatic Art who aspires to the highest success must give himself whole-heartedly to the study of his chosen art; his need for general cultural training is vital, but the time which he can devote to it is limited. The Survey Classes solve his problem by covering in a minimum of time a maximum of ground in the most essential subjects.

Violin Normal Class. P. MARINUS PAULSEN. Study of violin teaching methods (including the class method), and violin teaching repertoire.

Vocal Technic and Repertoire Class. ELSE HARTHAN ARENDT. The subjects treated in this Class are similar to those taken up in private Voice lessons, but through membership in this Class, the student is brought into contact with the problems of other students and is taught to listen critically and to analyze technical faults.

A DESCRIPTION OF THE NEW *Sherwood Music School Printed Text*

Scope

THE NEW Sherwood Music School Printed Text covers all the essentials of a good musical education for piano students. In accordance with modern educational principles, it includes everything necessary to an understanding of the theory of music, and ample technical material for practice and repertoire, with proper correlation of both. The student's proficiency in Applied Music (Technic, Interpretation and Repertoire) rests on a foundation of thorough training in General Theory, Ear Training, Harmony, History of Music, Form and Analysis, Appreciation and Counterpoint. The study of these subjects greatly accelerates and improves the student's mastery of the keyboard.

The Text is the culmination of the School's experience of more than thirty-five years in training serious music students and has been prepared throughout by members of the artist faculty.

The complete Text comprises:

- 160 Printed Theory Lessons, with Tests.
- 100 selected Piano Exercises, with annotations by members of the artist faculty.
- 136 selected Piano Studies, with annotations by members of the artist faculty.
- 98 selected Piano Compositions, 66 of which have been thoroughly edited and annotated by members of the artist faculty.

The Text is divided into eight grades. Each subject is taken up from the beginning and carried through to its most advanced phases.

All parts of the Text are interwoven and correlated—the theoretical subjects with one another, and the technical divisions with the Theory Lessons. What the pupil learns in the Theory Lessons, he promptly applies to the keyboard.

The technical material includes those Exercises, Studies, and Compositions which have stood the test of time, and which are used by competent instructors everywhere. All the principles of modern piano technic are exemplified.

The annotated Exercises cover every technical problem. The annotations correspond to the private lessons which the artist teachers who wrote them would give on the same Exercises.

The Studies, also annotated, include the best of Bach, Chopin, Burgmüller, Clementi, Czerny, Cramer, and others.

Of the annotated Compositions, ranging through all schools—Early, Classical, Romantic, and Modern—66 are required because they represent items of musical literature which every piano student should know. Thirty-two additional Compositions may be selected from a catalog of 400 classical and modern items. The complete selection was chosen from an examination of more than 7000 pieces.

Uses

The Text is used as a basis of the instruction given by teachers in the Main School and Chicago Branches.

The Text is used as a tool by Affiliated Teachers in charge of Extension Branches in all parts of the country, in giving instruction which is directly unified with that given in the Main School. The pupils of such Affiliated Teachers, studying the Text under the joint supervision of their local Affiliated Teachers and the School, are enabled to earn credits leading to a Teacher's Certificate and Diploma from the School, through its Extension Department.

The Text is used by ambitious out-of-town teachers as a means of bringing their own training up to date and keeping it so. Through study of the Text, it is possible for them to earn, through the Extension Department of the School, a Teacher's Certificate and Diploma and to lay a foundation for earning the Bachelor of Music Degree.

Advantages

Affiliated Teachers using the Text to supplement their oral teaching, find it offers many advantages, and solves many of their problems.

The Text very largely prevents forgetting, because the pupil has with him, in printed form, for constant reference throughout his week of practice, the instruction given him in his weekly lesson. Weekly written Tests and periodic written reviews assist further in impressing indelibly upon the pupil's memory the subject matter covered. This makes for rapid progress and economy.

A system of reports and grades, and a series of rewards keep the pupil interested and active. He has a definite goal to reach, and he knows from week to week just how far he has progressed toward it. Through his written Grade and Mid-Grade Tests, which are sent to the Main School to be graded and recorded, he has frequent contacts with the School, which are a source of inspiration to him.

The Text enables the Affiliated Teacher to give easily all the subjects necessary to a complete musical education, including not only Technic, Interpretation and Repertoire, but also General Theory, Ear Training, Harmony, History of Music, and other subjects which are commonly neglected but which are as essential to pianistic advancement as keyboard training. Moreover, each phase of each subject is automatically taken up at the right time.

The Affiliated Teacher's prestige is enhanced by his ability to offer his students opportunity to earn Teachers' Certificates and Diplomas through the Extension Department of a nationally recognized conservatory.

Foreign Branches

Australia

SYDNEY

A. PODINOVSKY (Violin)

Canada

WINNIPEG, MAN.

MRS. E. C. WIENEKE (Piano)

FT. ERIE (NORTH), ONT.

*ETHEL K. ROBERTSON (Piano)

SAULT STE. MARIE, ONT.

DORIS KNIGHT (Piano)

China

HONGKONG

HARRY ORE (Piano)

Czechoslovakia

PRAGUE

ERWIN SCHULHOFF (Piano)

France

PARIS

Paris Master School of Voice
(ANNA EL TOUR, Director)

Paris Piano School
(PIERRE LUCAS, Director)

Paris Master School of Violin
(ALBERT JAROSY, Director)

GERARD HEKKING ('Cello)

TAMARA LUBIMOVA (Student Advisor)

Germany

BERLIN

JOSEPH SCHWARZ (Piano)

HAMBURG

SENIA GREVE (Voice)

Hawaii

HONOLULU

AMY HABERER (Piano)

Holland

AMSTERDAM

JAAP SPAANDERMAN (Piano)

India

COLOMBO, CEYLON

CLARA MATWASSI (Piano)

Japan

KOBE

A. M. RUTIN (Piano)

Java

DJOCJAKARTA

WALTER SPIES (Piano)

Korea

PYENGYANG

*DWIGHT MALSBARY (Piano)

Mexico

MEXICO CITY

CHRISTINA GARZA LEAL (Piano)

Straits Settlements

SINGAPORE

M. LITTER (Piano)

Switzerland

GENEVA

MAD. SUNDA MADIER (Dancing)



ANNA EL TOUR
Voice Instructor, Paris Branch



PIERRE LUCAS
Piano Instructor, Paris Branch



ALBERT JAROSY
Violin Instructor, Paris Branch



SENIA GREVE
Voice Instructor, Hamburg Branch



ERWIN SCHULHOFF
Piano Instructor, Prague Branch



JOSEPH SCHWARZ
Piano Instructor, Berlin Branch

Domestic Branches

CHICAGO NEIGHBORHOOD BRANCHES

ALBANY PARK.....3304 Lawrence Ave.
AUBURN PARK.....822 West 79th St.
AVALON.....1904 East 99th St.
BEVERLY HILLS.....10301 South Hale Ave.

CHICAGO LAWN.....6247 South Kedzie Ave.
GRAND CROSSING.....7439 Cottage Grove Ave.
JACKSON PARK.....6760 Stony Island Ave.

NORTH TOWN.....2337 Devon Ave.
OAK PARK (Central).....141 South Oak Park Ave.
OAK PARK (Fair Oaks).....214 Chicago Ave.
SOUTH SHORE.....2208 East 71st St.

Affiliated Schools and Teachers (Alphabetically Arranged)

Alabama

ATMORE
*Mrs. L. B. Farris
AUBURN
May Meadows
BAY MINETTE
*Mrs. I. F. Simmons
*Mrs. L. D. Whaley
BESSEMER
Mildred Farr
BIRMINGHAM
*Mrs. Wm. Gussen
Myrtle Mae Jones
Berte R. Rogers
BLOUNTSVILLE
Alta Finley
FAIRHOPE
*Mrs. Augusta Quarles
Magehan
FLOMATION
*Annie Lee French
FLORENCE
Amelia Boddie
MOBILE
*Clara B. Evans
*Mrs. L. L. Havens
*Lillian V. Previtt
MONROEVILLE
Sara E. Dennis
PRATT CITY
*Mrs. E. B. Womack
SILVERHILL
*Louise J. Lundberg

Arizona

DOUGLAS
Ida Hickman
FLAGSTAFF
*Mrs. Harold H. Long-
fellow
PHOENIX
*Maude Pratt Cate
WINSLOW
*Beth Mae Day
YUMA
*Mrs. A. C. Abbott
*Sarah W. D. Hamilton
*Gertrude Diehl Turrell

Arkansas

BENTON
*Lorene Carson Houston
BENTONVILLE
*Catherine Smartt Terry
CAMDEN
*Anna Smead
ELDORADO
*Wallack Bros. School
of Music
(Carrie Wallack)
FORDYCE
*Fay Dunn
FT. SMITH
*Mrs. Joe E. Leming
*Mary Luretha Leming
GREENWOOD
*Juanita Hicks
HELENA
Donath-Zeran Music
School
(Kurt Donath)
(Ruth Z. Donath)
HOT SPRINGS
J. R. Callahan
MALVERN
*Miss Agee E. McCray
PARIS
*Sister M. Crasence
RUSSELLVILLE
*Mrs. Thomas N. Bragg
SMACKOVER
*Mrs. Floyd W. Barnes
*Harriet Gibson Johnston
STUTTGART
*Kathleen Elms
TEXARKANA
*Emily Mayhue Richards

California

ALAMEDA
*K. W. F. Balke
*Margaret Milne Brye
*Beulah Marshall
Thorne
*Ruth Jenkins Tibbey
*Ada Lee Young

ALHAMBRA
Ella L. Hart
Clarence D. Kellogg
ALTADENA
Mrs. L. V. Robertson
ANAHEIM
*Mrs. Dixie Wilbur
ANTIOCH
*Lyle C. True
ARCADIA
Myrtle Knorr
AROMAS
*Angie C. Machado
ATASCADERO
*Gladys V. Jacobson
BAKERSFIELD
*Mrs. Harry Binns
*Henry Camprubi
BARTOW
Stephanie F. Peck
BELL
Genevieve T. Stivers
BELLFLOWER
*Harry Marmer
BERKELEY
*Margaret T. Currier
*Mrs. Adolph de
Freemery
*Eleanor Mae Edson
Emily Jo Robinson
BEVERLY HILLS
*Marguerite Schwingler
BISHOP
Gertrude Horner
BRAWLEY
Marie Bostwick
BURLINGAME
*S. Bernice Barnett
*Hazel Maude Frost
CALISTOGA
*Phillus A. Kelly
CARPINTERIA
*Minnie Pulliam
CHULA VISTA
Mrs. E. J. Searle
CLAREMONT
Louise Stover
COMPTON
*Mrs. L. K. Bennett
*Mildred Olsen
*Violet Marguerite
Ruth
*Urias Williams
CORONA
Hilda M. Liebig
CORONADO
Mrs. J. Wayne Elliott
COVINA
*Harriett M. Goodell
DINUBA
May Eigensatt Flower
EAGLE ROCK CITY
H. Leora Johnstone
EL CAJON
Emma R. Stough
EL CENTRO
Elmer A. Todd
EL CERRITO
*Louise Thompson
EL MONTE
Mrs. J. A. Cawood
EXETER
Calvo Marie Stuart
FRESNO
Myra Aarestrup
*Mrs. Chas. Coggins
*Agnes G. de John
*Mary E. Geerts
Mildred Lee Lynch
*Mrs. Carla Reed
FULLERTON
Clara Newcomb Askin
GLENDALE
S. Gertrude Champlain
Glenora
Ruth Bagnell Town-
send
GLENORA
Phoebe H. Appy
HEALDSBURG
*Florence W. Haigh
HERMOSA BEACH
Florence Shaw
HOLLYWOOD
*Isabelle Lloyd Ander-
son
*La Verne C.
Fleetwood
Sarah Layne
Gladys T. Littell

*C. Purves-Smith
*Josephine Purves-
Smith
*Gertrude Ross
Suzanne Joyce Spear
H. E. J. Vernon
HUNTINGTON PARK
Sylvia S. Brownfield
Frederic Grotton
*Ella Margaret Sarka
IRVINGTON
*Oliver Campos
LA HABRA
*Eva M. Fenner
Ethel B. Phillips
LODI
Blanche K. Davies
*Edna Ethel Meier
LONG BEACH
Lora Sprague Baldwin
*Edith Kesler Cline
*Alice S. Durham
*Pauline Farquhar
*Marguerite Garrison
*Ila Dee Godard
*Marion Hardy
*Vera Taylor Harper
*Mrs. Watson L. Hawk
Mabel Lewis
Edith L. Lovett
*Ruth C. Miller
*Mildred Olsen
*Elizabeth O'Neil
*Olive Haskins Read
*Mae Gilbert Reese
Norma Reynolds
Stella A. Schwenker
*Evelyn Potter Smith
*Ruth L. Stewart
*Katherine Knudsen
Unmack
*Margaret Waldron
LOS ALTOS
*Leonora de Benedetti
LOS ANGELES
Mary Christine Albin
Ramona Baker
Raymond H. Baldwin
Grace M. Bishop
Alice Gibson Both-
amley
*Frances Stults Cam-
bell
Martha V. Close
*Edna Cooke
Adele Dorothy Davis
*Mr. Abby DeAvriest
*Mildred G. Haines
*Raymond G. Hand
Flora Holst
Mrs. A. G. Hulett
*Mary McCormack
Kennedy
*Irene Kussero
Verda Mae Langston
Mrs. R. C. Larkin
*Adelaide Gonsell Lee
Lydia Elizabeth Lewis
*Mrs. Eartha Iim Lochr
Coleman B. Long
*Blanche Rogers Lot
Mrs. John Madison
Ann Etta May
J. Franklin Newman
B. H. Pearson
Mrs. Chas. Peck
*Charles E. Penberton
*Edna Gunner Peterson
N. L. Riderhoff
Howard D. Sellers
Hazel Hays Smith
*Olga Steeb Piano
School (Olga Steeb)
Lou Etta Sutherland
Edna Thompson
*Isabel Tone
Thelma C. Vivian
*Emele Wendel
Mrs. Ewart Williams
Daisy Winfrey
Emil L. Winkler
MADERA
*Fay S. Frederick
MARTINEZ
*Marguerite Curtz
Fleetwood
*Dorothy G. Barney
*Grace G. Parker

MODESTO
Carrie B. Curtis
MONROVIA
*Clara E. Ingham
MOUNTAIN VIEW
Maude Rinaman
NAPA
*Elma Daglia
*Gertrude E. Lamdin
NO. HOLLYWOOD
*Marjorie Duncan
Baker
OAKLAND
*Elizabeth Goff
*Mrs. Etta Hall
*Mrs. Mervyn Cushing
Howard
*Helen C. McNitt
*Oakland Conservatory
of Music
(Wm. C. Nicholls)
*Water J. Rudolph
*Frank L. Svenson
*Mrs. L. M. van Lo-
ren Sel
*Mrs. Leoline A. Wal-
ton
PALMS
*Reed Long
PALO ALTO
Grace Isabelle Os-
monson
Mrs. Monica Ting
PASADENA
Rita B. Ackerman
Edna Althouse
*Morton F. Mason
*Alice Coleman Batch-
elder
Mrs. Henley Bussing
Myrtle Enycart
*Morton F. Mason
*Helen McCreery
George Arthur Morti-
mer
Harold Porter Smyth
Olga E. Stallfort
Petaluma
Frances Marie Neil
PIEDMONT
*Ester M. Pomeroy
PITTSBURG
Mrs. C. T. Rouner
ST. PASADENA
*Susan Tripp
POMONA
*Loren W. Adair
Edna H. Bresnahan
REDDING
*Bess E. Lee
*Harriette A. Saeltzer
RIVERSIDE
Florence E. Lorbeer
Minnietta Buchner
Porter
ST. HELENA
*Mabelle M. Seuter
SAN BERNARDINO
*Charles M. Galloway
SAN DIEGO
Leila Black
Florence M. Bradley
*Eva N. Groves
Fred A. Groves
*Benjamin F. Locke
Maud Holcomb Lydick
Mrs. H. W. Sharman
Etta Smith Snyder
Mrs. J. I. Ward
SAN DIMAS
*Dolores Cassel
SAN FRANCISCO
*Francesca Alsing
*Marie L. Cain
*Howard E. Couper
*Eleanor M. Depauli
*Eleanor C. Drewe
*Ida Helen Fitcher
*Catherine G. Foster
*Marie Gashweiler
Florence Guerin
*Mrs. W. H. Hord
*Inez Lenore Horn
*Rena Mooney
*May L. Porter
*Meryl Prince
*Samuel Rodetsky
Lola Gwin Smale

*Charlotte Theobald
*Lea Vergano
Evelyn Sresovich
Ware
*Marjorie Elworthy
Young
SAN JOSE
*Elizabeth Pugh
*Esther A. Wegner
SAN LEANDRO
*Nita Meister Herrick
*Anna V. Staley
SAN MARINO
Blanche Ragsdale
SAN MATEO
*Mrs. N. M. Ryley
Anna Van Valin
SAN PEDRO
*Lilore K. Barton
SAN RAFAEL
*Mrs. Cornelle Bue
Reeves
SANTA ANA
Freda Moesser Barger
*E. D. Hale
*Edna H. Jones
Daisy Austin Marsden
Leonora Tompkins
SANTA BARBARA
*Roger Clorbus
Caroline K. Dunshee
Pearl A. Merrill
SANTA CRUZ
*Violet M. Patterson
*Hope H. Swinford
SANTA MARIA
*Muriel Fisk
SANTA MONICA
*Roxana Weibe Byers
*Evelyn Boyd Drescher
Lallah Fulton
Gretchen Rebek Gripp
Mrs. F. L. Ober
Hugo Scherzer
SANTA PAULA
Alice Bale
SANTA ROSA
*Edith A. Lutz
SEBASTOPOL
*Claire Coltrim
SHAFTER
*Mrs. D. W. Nikkel
ST. PASADENA
*Emily Huntington
Miller
STOCKTON
*Mrs. N. H. Arthur
*Dr. E. W. Hillsdon
Hutton
Mary Evelyn Knox
*Corra B. Meyers
TAFT
*Lucy A. Morris
TRACY
*Margaret Garner
Montfort
UPLAND
*C. Bertha Palmer
VACAVILLE
*Edith Samuels
VALLEJO
Bessie N. Butler
VAN NUYS
*Benjamin F. Locke
VENICE
Minnie Eastman
VENTURA
*Minnie Pulliam
VISALIA
*Mrs. J. Roy Wimp
WALNUT CREEK
*Frances M. Jorgensen
WESTWOOD
*Eleanor M. Wilson
WHITTIER
*Eleanor C. Drewe
Cunningham
Louise W. Harmon

Colorado

ALAMOSA
Gladys Helen Hood
ARVADA
*Willie Beugley
*Vera Cutler
*Mrs. Robert T. Kerr

BENNETT
*Eve Wagner
BERTHOUD
*Mrs. Monta V. Wag-
ner
BOULDER
*Mrs. D. J. Calhoun
*Mrs. Wm. F. Estey
*Harriet L. McCuskey
*Sister Mary Laurentius
BRIGHTON
*Grace Griffin
*Mrs. Verner Smith
BRUSH
*Janie M. Echols
*Edith E. Jobush
CANON CITY
Julia Newell Chappell
Robert Lithgow Dick
*B. Ruth Goetz
*Mrs. A. Hoffman
Phena Louise Logan
Hazel Holman Reiter
Helen S. Wilson
COLORADO SPRINGS
Wilber L. Gough
Beryl Griswold
E. D. Hale
DENVER
Anna H. Alexander
*Lorene White Austin
Hermann J. Bigler
*A. B. R. Bledorn
Mrs. J. R. Brown
*Mildred Carney
*Colorado Music Institute
(S. Bloom)
*Roy E. Culler
*Sarah H. Dillner
*Darlene Evinger
*Mrs. Roy W. Fisher
Edward B. Fleck
*Julia Cadwell Hockett
Sybil A. Hosmer
Geneva R. Kuntz
Miriam Grant Linde
Florence Lovett
*Helen Mae Martin
*Mrs. E. R. McElroy
*Edith B. Oaks
Frances E. Steton
*P. G. Zieschang
DURANGO
*Lola M. Nightingale
EASTLAKE
*Alma S. Elmore
EATON
*Corra Fleming
*John R. Gillies
*Sara M. Hill
EDGEWATER
Mrs. W. J. Shaffer
ENGLEWOOD
*Lois Owens
*Rose Robinson
FLORENCE
Mrs. M. E. Adkinson
FORT COLLINS
*F. Collins Academy
of Fine Arts
(Marguerite Ells-
worth)
*Elizabeth F. Mariner
*Montrose-Graham
Conservatory
(Lillian Montrose-
Graham)
FORT LUPTON
*Clara H. McKissick
GREELEY
*Marguerite D. Lowry
Mrs. Laurence M.
Thompson
LITTLETON
*Lella Dean
LONGMONT
Bessie Bennet
*Cecile Carlyle
*Mary B. Finney
Mrs. Monroe Markley
LOVELAND
*Amoria Fauver
*Mrs. A. B. Mc-
Willande Beugley
*Vera Cutler
*Mrs. Robert T. Kerr

DOMESTIC BRANCHES—Continued

Affiliated Schools and Teachers (Alphabetically Arranged)

Colorado—Cont.

PUEBLO
Jeanne MacGregor
Rettberg
Mrs. Roger Wheldon
SALIDA
James S. Ramey
STERLING
B. Rhodes
ANNA B. Lyman
TRINIDAD
Laura Tichenor Beaver
WALSBERG
Caroline S. Young

Connecticut

ANSONIA
Edith L. Tallberg
BRIDGEPORT
R. E. Rhey Garrison
COSCOB
Ruth G. Jaycox
CROMWELL
Anna Deering
DANBURY
Phoebe R. Johnson
EAST HAMPTON
H. Eleanor Paine
EAST HARTFORD
Ethel W. Hale
GLASTONBURY
Hattie M. Turner
HAMDEN
Edith S. R. Faile
HARTFORD
T. Francis Crowley
MERIDEN
Bertha Hartman Lasley
MIDDLETOWN
Dorothy G. Hull
MILFORD
H. Priscilla Holmes
ROCKY HILL
Anne R. Robbins
SAUGATUCK
George S. Hendricks
WEST HAVEN
Mrs. Signe Nordin
Luring
WETHERSFIELD
Lilian Fales Popham

Delaware

DOVER
Dover School of Music
(Helen B. Hughes)
WILMINGTON
Floyd Shorter

District of Columbia

WASHINGTON
Kathryn Harrison
Arthur
Thelma Callahan
Alice Burbage Hesselbach
Mary Tarbell Kenestruck
Louis A. Potter
Fanny Roberts
Thunilda Schaffer
LaSalle Spier
Mrs. Starr Preston
Sprink
Gene Stewart
Etta Schmid Wells

Florida

ARCADIA
Mrs. W. R. Campbell
DELAND
Eugene Phillips
Eva Baker Welch
LAKE WORTH
Alice M. Weldon
MIAMI
Louise W. Warren
ORLANDO
Edna Ingold
Charles H. Marsh
SANFORD
Ella B. Essex
TAMPA
Hilda Krehler
Thelma Dorris Mote
WEST PALM BEACH
Mrs. E. M. Montgomery

Georgia

ALBANY
Carrie Shook
AMERICUS
Kate Land
ATHENS
Katie J. Griffith
ATLANTA
Mrs. Armond Carroll

*Lenus Daniell
Merrill Hutchinson
Jessie D. Jones
*Josephine Pause
Alma Garrett Ware
Florence Watson
Ruth Wiegand
BLAKELY
Annie V. Womack
BUDFORD
*Anne Rankin
CAIRO
*Mrs. L. L. O'Kelley
CEDARTOWN
Helen Purks
COMMERCE
*Mrs. Ernest Jackson
CORDELE
*Mrs. Thomas Thompson
CORNELIA
*Minnie Coleman
DALTON
*Kathleen Graves Lee
DECATUR
Mrs. J. G. Addy
DUBLIN
Grace Cowart
GRIFFIN
Nettie Sherwood
LA GRANGE
Viola Burke
Jeannette Wilhoite
LAWRENCEVILLE
*Mary J. Hutchins
MACON
Kate Henderson
Marianne Jones
Mrs. W. O. Reeves
Mrs. W. W. Solomon
MARIETTA
*Mrs. George E. Daniell
MARSHALLVILLE
Mary D. Baldwin
ROME
Amelia C. Berry
Mrs. Edward Cantrell
THOMASVILLE
Mary B. Harrison
Ethel Silva

Idaho

KIMBERLY
Mrs. H. T. West
LEWISTON
Doris Gilmore
*Annie Ely Magallon
Mrs. Vonley J. Miller
MOSCOW
Mrs. Artie Ellen Kelley
PRESTON
*G. Gene Prather
TWIN FALLS
*Eula Massoner Connor
WALLACE
Rena Albino
Ellen C. Smith

Illinois

ALTON
Mrs. Chas. E. Pettengill
AMBOY
*Phillips R. Flach
ARLINGTON HTS.
Celia A. Haussam
ARROWSMITH
Ethel K. Wheeler
ARTHUR
Hazel D. Galbreath
*Margaret C. Knoblock
Florence Wiggins
ASHLAND
Florence W. Wilson
ATHEENS
Harriet Swingle
ATLANTA
*Miss Harville Crandall
AURORA
*Agnes L. Conn
*Maude Dewey
*Carrie Doetschman
*Anna Largent
Sister M. Laudisia
Burdell Sorenson
Mrs. Luyard G. Thorpe
*Vivian Watson
BARRY
*Lois Bartholomew
BATAVIA
Ralph Norman Peterson
BECKEMEYER
Lounetta Sharp
BFLVIDER
*Mrs. A. E. McCormick
BENSENVILLE
*Florence W. Kramp

BENTON
*F. H. Wykes
BERWYN
Mary Rives Brown
Evelyn Frisby
Natalie Kastel
BLOOMINGTON
*Bernice Zook Basting
Mabel D. Orendorff
*Schwieemann Music School
*Pauline Linee
(Hermann Schwiemann)
BLUE ISLAND
*Walter Bauer
CARBONDALE
*Harlowe Arras
Sheila Hodges
CENTRALIA
*Centralia Conservatory
(Ralph A. Pailey)
Mrs. E. Harmon
Theresa Pfeiffer
CHAMPAIGN
*Lester Van Tress
CHICAGO
*Alfred C. Anderson
*Elsie A. Distler
*G. W. Drobegg
*Celia Ginsburg
*Julia R. Grunwald
*Florence Kagan
*Florence Academy
(Sister M. Denise)
*Catherine E. Manz
*May Powers Miller
*Ellen C. Nelson
*Helene Vernson Oden
*George C. Piper
*Marvan S. Rozycki
*Leon Van Horn
*J. Virginia Wendell
*Edith M. Wright
(See also page 25)
CHICAGO HEIGHTS
*Lulu Fleming
CICERO
*Sylvia Konvalinka
Jessie B. Robinson
Sister Pelagia Daniels
Anna Straka
CLARENDON HILLS
*Helen Ruthhart
COLFAX
Cleo Fern Ritchie
DANVERS
Florence Miller
DANVILLE
*Esther Canaday
*Amy Laker
*Agnes D. McClure
Emily L. Moore
DE KALB
*Dorothy May Banfield
*Aune Huhta
*Gladys Jackman
*Mrs. G. W. Reynolds
*Alma E. Grambauer
DES PLAINES
*Alta E. Lafferty
DIXON
*Maude Goodsell
*Crawford A. Thomas
DOWNS
Mrs. E. C. Williams
DUNDEE
Mrs. B. C. Mason
DUQUOIN
Mrs. H. O. Pope
DWIGHT
*Elsie F. Earley
*Olga I. Short
EARLYVILLE
*Charles Wiley
EAST ST. LOUIS
*Lydia Helms
ELKHART
*Virginia Wise
ELGIN
*Mrs. R. A. Adkins
*Ruth Johnson
Ruth Gifford Preston
*Annie W. Rowland
Sadie Stuart
ELMORA
*William J. Rudow
Isabel Powers Secor
EL PASO
*Josephine E. Michels
EUREKA
*Margaret M. Tomb
EVANSTON
*Mrs. A. D. Bodfors
*Esther Schluter
FAIRFIELD
*Mrs. Ben C. Boggs
Lila Stonemetz

FOREST PARK
*Charles F. Smith
FRANKLIN
*Emma Burnett Calhoun
FREEPORT
*Beulah Brubaker
*Florence Griswold
*Iva Swingley Wheat
GALESBURG
*Ruth M. Duggan
*Elma S. Ingram
*Harriet Kimpton
*Maude Alma Main
GALVA
*Helen Headland
GENEVA
*Elsie F. Earley
*Florence L. Smith
GILMAN
*Mrs. C. N. Barnes
GILSON
*Gladys O. Upp
GLENCOE
*Romaine M. Gunstons
GLEN ELLYN
*Elizabeth P. Cooper
GRANITE CITY
*Bessie Morgan Reese
GRAYS LAKE
*Jean McFarlane
GREENUP
*Mrs. J. A. Campbell
*Harrisson
*Mary Christina Jarvis
HARVEY
*Elizabeth Hutton
HIGHLAND PARK
*Agnes McGuire
HILLSBORO
Ida Truitt
HOLLYWOOD
Mrs. W. C. Overholt
HOMEWOOD
*Edna R. Lewis
JACKSONVILLE
*Stella A. Ring
JOLIET
*Theron J. Converse
*Mae A. Hendrick
*Isabel V. Hill
*Joliet Conservatory of Music and Dramatic Art
*I. Wallace Spears
KEWANEE
Lillie E. Anderson
Mrs. B. J. Brynilds
*Dagney Carlson
*Mildred Patterson
*Hugh C. Price
*Elsie Tristler
LAKE FOREST
*Millicent Christner
LA SALLE
*Hubert Kaszynski
*Hugh C. Price
LEE
Helma Eden
LELAND
*Ruby A. Hanson
LIBERTY
*Maud C. Lucas
LIBERTYVILLE
*Grace Hammelton
Howard
*Frederick Schneider
LINCOLN
*Paul Merry
LOCKPORT
Mrs. S. J. Gains
*Victor A. Pesavento
LOMBARD
*Mrs. Arzel P.
*Kroeger
MACOMB
*Mrs. H. H. Harris
MALTA
*Dorothy Banfield
MANVILLE
*Helen McVay
MARENGO
*Lutie M. Motesney
MARSEILLES
*Elsie Hunter
MARSHALL
*Hazel Rupert Evans
MASON CITY
*Inez A. Freeman
MENDOTA
*Clara L. Reul
MINONK
*Mrs. Harrison Parks
MOMENSE
*Bertha A. Durham
MONMOUTH
*Maude Alma Main
MONTICELLO
*Alice W. Tilley
MORRIS
*Verna Nelson

MT. VERNON
*Zelma M. Eddy
NAPEERVILLE
*Grace Fredenhagen
Sister M. Conradina
NEWARK
*Mary S. Freeman
Mina Ruth Koska
Emma Mathre
Julia Severson
NILES CENTER
*Phoebe F. Biederdorf
Sister M. Catherine
NORMAL
*Ella Jorgensen
OAK PARK
*Anna F. Petersen
(See also page 39)
OGLESBY
*Pauline Harth
OREGON
*Wyota A. Thorpe
OTTAWA
Elizabeth Malcolm
Mrs. Tios. W. Maxwell
Mrs. C. C. Paisley
Emma Rebecca Rorem
*Edna Schaefer
PALATKA
*Audrey May Bennett
PARK RIDGE
*Edward Gould Hill
Geo. R. Keck
*Helen M. Keller
PAW PAW
*Orla Nangle
PAXTON
*Anna Lundeen
PEKIN
Minnie Huffman
Mrs. M. E. Tambling
PEORIA
*Laura Jordan Batterson
Miss C. E. Burkhalter
Clara E. Doyle
*Emma Ehlen
Marguerite Evans
Ida Iben
PEOTONE
*Irene Rathie
*Bonita M. Siemsen
POLO
*Adele Hostetter
Ina C. Reed
PONTIAC
*Gladys Erickson
Mary Fillingham
PRINCETON
*Rosalie Tragordh
QUINCY
*Gertrude Grese
Lubbie M. Haskett
*Walter H. Tanner
REDDICK
Viola Prussner
RIVERSIDE
*Gladys M. Cameron
*Cecilia C. Hudson
ROBINSON
*Mary E. Corwin
ROCKFORD
Sigurd T. Anderson
*Mabel Viola Asprooth
*Mrs. A. D. Bodfors
*Grace Callender
*Mary Carlson
*Margaret Dyer
*Ethel Ruth Eyster
*Mary Carolyn Gentz
*Lillis M. King
*Mrs. Frank M. Scager
*Wyota A. Thorpe
ROCK ISLAND
*Frank Freistat
*Suzanne J. Meachan
RISCOE
Ida Sammons
ST. CHARLES
*Eva Hunt Lacy
SANDWICH
*Bernice Rogers
SANTA JOSE
Alma Adolph
SAVANNA
*Mrs. W. G. Kent
SERENA
Hannah M. Ness
SEWARD
*Sten Jensen
SHELBYVILLE
*Kathryn Beem
SPRINGFIELD
*Sister Brennan
*Eldon B. Buckles
*Margaret Chambers
*Margaret Nelson
*Lillian Rittenhouse
*Alice W. Tilley
SPRING VALLEY
*Mrs. Archie J. Foley

STERLING
*Kathryn W. Calhoun
STRACTOR
*Louise C. Castelli
TAYLORVILLE
*Anna Johnston
URBANA
*Bernice J. Douglas
*M. Harold Hies
VIRGINIA
Iva M. Lancaster
WARSAW
*Mabelle Nagel
WASHBURN
*Neve Zeiger
WATSEKA
Ida B. Kay
WAUKEGAN
*G. W. Drobegg
WAYNERSVILLE
*Boss L. Bradford
WAYNESVILLE
Litta Hunt
WEST CHICAGO
Mrs. G. H. Graves
WHEATON
Mrs. Wm. Kuntze
*Eliz. Quigg Lewis
WHITEHALL
*Audrey May Bennett
WILMINGTON
*Josephine F. Daley
WINFIELD
*Amy Leonora Allan-son
WINNETKA
*Mary Merrills
WOODSTOCK
*Mrs. E. E. Bokemeier
Mrs. William Charles
*Hughes
*Carrie Lawson
YORKVILLE
Julia Knudson

Indiana

ALBION
*Valura M. Franks
ALEXANDRIA
*Alexandria School of Music (Ada Stone)
ANDERSON
*Florence Rencenberger
ATTICA
Ina C. Reed
AUBURN
Mrs. Mildred Clow
AUBURN
Mrs. Russell L. Holden
AVILA
*Mildred J. Cornell
BLUFFTON
Mrs. Anna M. Effinger
BOUBON
*Gladys Blue
*Maud Ruth Huff
Gerard
BRIEN
*Beata E. Bartels
BUTLER
*Hilda Funk
CARTHAGE
*Alta H. Carr
CHESTERSTON
*Irma M. Stephens
COLUMBIA CITY
*Ruby E. Bishop
*Vera Cargile
*Mabel H. Parrish
*Ethel Rogers
COLUMBUS
Nellie Sparks
Mabel Tillman Sverkrup
Leona Trembley
CONNERSVILLE
*Lillian M. Bostick
CRAWFORDSVILLE
*Mrs. Hunter B. Leaming
CROTHERSVILLE
Lucy M. Ritz
CROWN POINT
Nettie Barman
CULVER
*Beatrice Irene Goss
CATHIANA
Fern McElroy
DUBLIN
*Lillian Evans Adams
EAST CHICAGO
Nellie Sparks Muha
Lucille Rhea
ELKHART
*Sister Brennan
Ella De Camp
Fern Gertrude George
Mrs. Clinton F. Loop
ELWOOD
Sister M. Dorothea
Lucila Swihart
*Lena Yarling

DOMESTIC BRANCHES—Continued

Affiliated Schools and Teachers (Alphabetically Arranged)

Indiana—Cont.

EVANSVILLE
Glennie Barr
Otto P. Schwartz
Albert Foster Smith
FALMOUTH
*Faye Vanderbeck
FT. WAYNE
*Ruth Evelyn Castle
*Cashid M. Crawford
*Ft. Wayne College of Music
(D. Walter Baier)
(Arthur C. Norman)
E. J. Germann
*Walter A. Hansen
*School of Fine Arts
(W. Meryle Hammond)
*Marian Zeigler
FRANKLIN
*Minnie C. Bruner
GARY
Helen Borman
Jessie Edwards Carlberg
*Mary S. B. Dickson
Tessa Whitney Eason
*Louisa A. Quillen
*Carl L. Reif
GOSHEN
*Elma M. Long
GREENCASTLE
*Lena Drayer Collier
GREENTOWN
*Mildred Agness
*Hazel Naffziger
*Charlotte Erwin Sloan
HAMMOND
Mabel Marie Byrnes
Ehel C. Holway
*John T. Murr
HARTFORD CITY
*Opal Greenlee
*Isaac E. Norris
HOBBART
*Elbert N. Ripley
HUNTINGTON
*Alice Foudy
*Huntington Music Studios
(Eather Davis)
*Mrs. Mark Riseborough
INDIANA HARBOR
*Michael J. Serbu
INDIANAPOLIS
Elsie Adams
Geneva M. Boettcher
Muriel Payne Conger
*Pearl M. Greulich
Mabelle Hendleman
Indiana Central University
Flora Ethel Lyons
Arthur G. Monninger
*Richard S. Orton
*Laura Craig Poland
Margaret Elenora Rasbach
*Alta Louise Thomas
Corrine Wilson
*Mary Clark Woodruff
Zillah Worth
KENDALVILLE
Zillah Thumma
KENTLAND
*Mrs. Ferol Davis
Keatts
KIMMELL
*Erma B. Gray
KOKOMO
*Mrs. C. H. Provan
*Elsie C. Clark
Fred Gaylord Cline
*Mrs. Jacenara Finley
*Edna S. Hite
Mrs. Edward Penn
*Mrs. George S. Pink
*Jeanette A. Sloum
*Geneva L. Smith
*Elta S. Straughn
*Mrs. Guy Wilson
KOUTS
*Erma B. Gray
*Gladys Purnoy
LAFAYETTE
*Sister M. Leonilda
LA FONTAINE
*Mrs. C. G. Smallwood
LINTON
*Mary Watson
LOGANSPORT
Dan W. Erb
LOWELL
Nora L. Pattee
*Sister M. Casilda
MARION
*Martha Houser

Aimee Reardon
*Edward Turechek
*Grace Jean Willen
MARTINSVILLE
*Rena I. Carver
MICHIGAN CITY
*Joy H. Carson
*Mildred D. Eddy
*Harriet Gard
*Mary Jane Sterling
MISHAWAKA
*Prof. M. S. Kunkel
*Roy E. Thornburg
MONROEVILLE
*Ethel C. Webb
MONTICELLO
*Mrs. T. V. Kooztz
MT. SUMMIT
*Mrs. Lee Richley
MULBERRY
*Olive Lehr
MUNCIE
*Jeanette M. Orr
*Harry W. Thomas
NAPPANEE
*Joy Bourne
*Cora Stuckman
NEW ALBANY
Amalie H. Scharf
Maude E. Thomas
NEWCASTLE
*Ethel Fadel
Mrs. Cleo Mours
*Donald E. Rogers
Leona Smith
OXTORD
*Mabel Hickman
PERU
*Caroline E. Hiner
*Vivian L. Smith
PIERCETON
*Marie Shirley
PLYMOUTH
*Lyla Mae Casterline
PORTLAND
*Mrs. L. O. Paddock
*Laura Craig Poland
PRINCETON
*Lillie E. Mills
REMSINGTON
*Mrs. John Ochs
RENSSELAER
*Mrs. Chas. C. Warner
RICHMOND
Mildred Schalk
ROCHESTER
*Ben L. Brandenburg
*Mrs. Orvan Van Lue
RUSHVILLE
*Mary L. Heaton
RUSSIAVILLE
Clara La Mar
SILVER LAKE
*James Timberman
SOUTH BEND
*Eileen Evert
*Gertrude Frepan
*George Z. Gaskin
*Cortland Good
Ruth B. Grove
*Russell V. Hupp
*Ruth Kise
*Grace A. Lanphier
*Theophila Makielaki
Mildred Miller
Orilla Myers
Helen Schlegel
*Eleanor Roeseener
Shonkwiler
*Bernice A. Simpson
*South Bend Conservatory
*Mrs. L. M. Steele
*Mrs. E. Van Every
*Mrs. W. E. Widmar
*Dorothy Zimmerman
SYRACUSE
*Mrs. H. D. Cress
TERRE HAUTE
*Amelia A. Meyer
*Adeline G. Schumeyer
*Florence Sidenbender
*Eda R. Steinaeker
TIPTON
*Sister M. Madonna
*Sister Mary Xavier
VALPARAISO
Ruth Harville
VEEDERSBURG
*Mrs. Alfred J. Hesler
WARSAW
*Josephine Alexander
*Winifred McClure
WALKERTON
*Alice Barney
WARREN
*Pearl Smith
WARSAW
*Katherine Coyle

*Warsaw Conservatory of Music
(Maude Snyder)
*Mariorie M. Baker
Witham
WASHINGTON
*Marie C. Dosch
WEST LAFAYETTE
*Winifred S. Graves
WEST TERRE HAUTE
*Mrs. J. B. Newland
WHITING
*Mrs. L. A. Helgeson
WOLF LAKE
*Veve Gray Kooztz

Iowa

ALBIA
*Evelyn Dalin
ALGONA
*Sylvia L. Gunn
AMES
*Mrs. P. E. Jackson
*Grace Minert
ANAMOSA
*Florence L. Hale
ANTHONY
*Graydon N. Asay
Mary Cavenaugh
BATTLE CREEK
*Edith Hansmann
BLOOMFIELD
*Mrs. O. E. Hirt
BOONE
*Sara E. Perrine
BURLINGTON
*Beatrice Kuepper
*Maude Alma Main
CALMAR
*Mrs. Onal Becker
CEDAR RAPIDS
*Ela M. Johnson
CENTERVILLE
*Edith P. Davis
CHURDAN
*Mary B. Perkins
CLARINDA
*Bernice Ruby Clough
CLARION
*Mrs. W. D. Pardon
CLEAR LAKE
*Maude E. Anderson
CLINTON
*Sue H. Powers
CORNING
*Mrs. Norman Magnusson
COUNCIL BLUFFS
*Eva Allshouse
CRESCO
*Pernice Dewey
CRESCENT
*Muriel Lewis
Muriel Laidlaw Wells
DANVILLE
*Jeanne Moeck
DAVENPORT
*Orville Foster
*Ervin F. Swindell
DES MOINES
*Louis Zum Brunnen
Agnes V. Flannery
Olga Hermanson
Elmer B. Tupper
Edith M. Usry
DE WITT
*Helen Bartling
EAGLE GROVE
*Pauline Kubitschek
EL KHART
*Virgie M. Reiser
EMMESBURG
*Olive Noble
FORT DODGE
*Anita Jameson
FORT MADISON
*Byrdie Zwald
GLENWOOD
*Mrs. R. E. Humphrey
GRAND VIEW
*Hazel McCully
HAMPTON
*Jacqueline Etter
HUMBOLDT
*Esther R. Sising
INDEPENDENCE
*Mrs. Karl E. Manz
*Doris Rowland
IOWA CITY
*Zita A. Fuhrmann
Maid Wetstein
LEON
*Alma Lucile McKee
MAQUOKETA
*Enlila McClain Gee
MARION
*Ruth E. Engstrom
MARSHALLTOWN
*Mrs. M. C. McBroom
MASON CITY
*Mrs. C. E. Cooper

*Bertha Patchen
*Ellen M. Smith
MELBOURNE
Clemma Winslow
Hanler
MISSOURI VALLEY
*Mrs. Guy R. Smith
MONTGOMERY
*Frances W. Keck
MT. Ayr
*Mrs. J. L. Miller
MT. PLEASANT
*Blanche Thorson
MUSCATINE
*Alice Chase
NEW HAMPTON
*Mrs. Frank J. Rehorst
NICHOLES
*Mrs. Walter Elder
ONAWA
*John D. Brandin
OSAGE
*Sister Mercedes
*Perna Miner Whitney
OSKAHOOSA
*Myrtle B. Thompson
PAULINA
*Mrs. W. J. E.
Thatcher
POCAHONTAS
*Mrs. I. H. Brokaw
PRIMGHAR
*Mrs. G. R. Little
QUASQUETON
*Mabel Fox
QUIMBY
*Mrs. Don C. Kent
RED OAK
*Mabelle Remiers
REMBRANDT
*Nellie Olson
RINGSTED
*Annie F. Welsh
ROLF
*Amy Ireland
SAC CITY
*Alma Hurst
*Charles H. Lawrence
SHENANDOAH
*Harold M. Greenlee
SIDNEY
*Mrl. Vernon Johnson
SIOUX CENTER
*Marie E. Mouw
SIOUX CITY
*Thalia Bishop
*Gertrude Hollenbeck
*Mrs. W. J. Jig
*Edythe Keiss
Cora Kilroy
*Mrs. Reena Wright
STORM LAKE
*Hildur Gustafson
TIPTON
*Laura Geller
WATERLOO
*Neve W. Ellsworth
Elizabeth Yaggy
WAUKON
*Mary R. Cain
WEBSTER CITY
*Ruth Stevenson
WEST UNION
*Hazel Waldron
WILTON JUNCTION
Mabel Dewesse

Kansas

ARKANSAS CITY
*Edwin Druley
AUGUSTA
*L. W. Tibbetts
CHENEY
*Alma M. Sailer
CLEARWATER
*Mrs. Virgil F. Young
OFFEVILLE
*Enma F. Mutchler
CONCORDIA
Elizabeth O'Reilly
EVEREST
*Mamie O. Madsen
FREDONIA
*Jessica Wille
GLASSCO
*Doris Rowland
HUTCHINSON
*Mrs. Ross H. Skinner
INDEPENDENCE
*Sarah Hughes White
JAMESTOWN
Myrtle Spicher
KANSAS CITY
*Maude Sanders
*Harvey H. Twineham
KINGMAN
*Mrs. J. W. Swain
MAIZE
*Mrs. Floyd Bowen

MELVERN
*Mrs. Fred Judd
PARSONS
*Fae Taylor
PRATT
*Rachael Oliver
TOPEKA
*Annie M. P. Bundy
*Mary Sands McIntroy
WICHITA
*Reno B. Myers
*Minnie N. Nash
*Alma M. Sailer
*Nellie Travis

Kentucky

CENTRAL CITY
Lula Boyer
*Mattie Edmunds Vicks
COVINGTON
*Walter E. Paris
DAWSON SPRINGS
*Mrs. J. I. Hoick
EARLINGTON
*Helen McLean
HARRDORSBURG
Ida Rena Van Diver
May Wilmore
HOPKINSVILLE
*Dorothy Hancock
LEXINGTON
*Helen M. Hair
LOUISVILLE
*Grace Wieber Best
*Virginia E. Matthews
*Nellie M. Meyer
*Christine Ebanks
Reccus
*Anna M. Schmidt
Carl Schmidt
MADISONVILLE
*Emma Marie Arbogast
*Marie Hodge
MAYFIELD
*Mrs. W. W. Robertson
MURRAY
*Lillian Watters
NEWPORT
*Gertrude A. Fisher
OWENSBORO
*Mrs. Nester Howard
*Olivia Stuart
*Ira Whitaker
PADUCAH
*Hazel Graham Moss
SEBEE
*Lucy Sellers
STANTON
*Mrs. W. L. Browning
STEARNS
*Mrs. W. A. Kinney
WINCHESTER
*Mrs. Fred Broadhurst
*Mrs. J. E. Grubbs

Louisiana

ARCADIA
*Mary Conger White
DELHI
*Mrs. W. P. Crawford
GREENWOOD
*Miss Tommie Wilson
HAYNESVILLE
*Miss Clyde Scott
*Poole
KINDER
*Olive O'Neil
MANGHAM
*Jessie McLain
MOORINGSPORE
*Mrs. P. J. Stevens
NEW ORLEANS
Katharine Dykers
Mrs. K. C. Trauth
OIL CITY
*Mrs. M. L. Tabor
RAYVILLE
*Mrs. E. B. Green
RUSTON
*Mrs. H. W. Nelson
SHREVEPORT
*Mrs. R. Hunter
*Bridges
*Mrs. Marvin Howell
*Mrs. John C. Prince
*Mrs. Arthur Leigh
Stevens
*Sarah Hughes White
*Miss Tommie Wilson

Maine

AUGUSTA
*Carema Bradford
*Caroline Fenno Chase
RANGOR
*Mae Weeks Hinton

BATH
*Carrie F. Luce
FRYEBURG
*Herbert A. D. Hurd
HALLOWELL
*Mrs. W. P. Bradford
OLD TOWN
*Mrs. Wm. F. Milliken
*Ruth E. Waterhouse
FORTLAND
*Fred Lincoln Hill
SKOWHEGAN
*Lora T. Nye
WATERVILLE
*Arthur F. Roundy

Maryland

CUMBERLAND
Alice Louise Mecusker
L. Marguerite Richard
Vera Scott
Joseph Williams
GRANTSVILLE
Beulah Engle
HAGERSTOWN
*Estelle Young
RIVERDALE
*Jessie Bierly Blaisdell

Massachusetts

AMESBURY
*Bertha M. Symmes
ANDOVER
*Marion L. Abbott
ARLINGTON
*Leon Biganes
*Mildred G. Kidder
*Mary K. McGarry
*Adeleide W. Proctor
*Katharine I. Yerrinton
ATLANTICBORO
*Lester E. Moore
BEACHMONT
*Edna E. Kimball
BEVERLY
*Harry A. Van Seen
BOSTON
*Helen Coates
*Jose da Costa
*Maud Wallingford
Downs
*Glenn Odrick
*Eunice Holton
Schlosky
BRIDGEWATER
*Bertha B. Beers
BRIGHTON
*Ethel Hutchinson
BROCKTON
*Rose Rancella Burke
*America Giannini
BROOKLINE
*Edna Cota Johnson
Ruth Shapiro
CAMBRIDGE
*Helene Diedrichs
*Antoinette von Eggers
Dorring
*Francis Edmund Hagar
CAROLINE A. Whitman
CANTON
*Dustin Russell
CONCORD
*Guiseppa de Lellis
*Mrs. Samuel Merwin
DORCHESTER
*Paul Bregor
*Ruth Lois Kramer
*Anna E. McKee
*Katharine Hutt Morton
EAST BRIDGEWATER
*Raymond E. Leach
EVERETT
*Edmond De. Sofi
*Samuel B. Glazer
OIL CITY
*Beatrice Holbrook
GLOUCESTER
*George B. Stevens
RUSTON
*Katherine E. Elliott
Lewis Hull
HINGHAM
*South Shore School of Music
(Mr. and Mrs. C. W. Holmes)
(G. Estella Holmes)
IPSWICH
*Doris E. Laite
*Arthur Harold Tozer
LAWRENCE
*Lordon Brown
*Martha M. Franz
*Sophia H. Yunggebauer
LEOMINSTER
*Ethel Jarvis Bailey

DOMESTIC BRANCHES—Continued

Affiliated Schools and Teachers (Alphabetically Arranged)

Mass.—Cont.

LEXINGTON
*Rose Ella Cunningham
LOWELL
*Wm. C. Heller
MAYNARD
*Ruby M. Hamlin
MEDFIELD
*Louise Brennan
MEDFORD
*Melina Lentino Manzo
*Grace Julia Posselt
MEDFORD HILLSIDE
*Edward Whitlow
MELROSE
*Elinor B. Likins
*Alma Holton Rich
MELROSE HIGH-
LANDS
*Constance B. Whitcomb
MILTON
*Harriet D. Baker
*Dorothy Bates
*Ella Kohler
NEEDHAM
*Raymond Coon
NEWTONTOWN
*Wilhelmina C. Wyld
NORTH ANDOVER
*Christina E. Hosking
NORTH QUINCY
*Ella Ames Horton
QUINCY
*Celina Beliveau
*Eleanor Granahan
Dacey
*Evelyn Mae Francis-
chini
*Lester J. Murdock
SALISBURY
*Edith True Marshall
SHARON
*Grace M. Davis
SPRINGFIELD
*Anna D. LaFosse
*Leonidas E. LaFosse
SWAMPSCOTT
*Fannie R. Natale
WAKEFIELD
*Geneva D. Hodson
*Blanche M. Sanborn
WALTHAM
*Olive Davis Flagg
WEBSTER
*Adolph L. Dugas
WELLESLEY HILLS
*Gerald F. Fraze
WEST MEDFORD
*Eunice M. Kiley
WHITMAN
*Marguerite J. Kane
WINCHESTER
*Clara Fountain Carson
WOBBURN
*Marita D. Scalley
WOLLASTON
*Edward B. Whittridge
WORCESTER
*Carl Sigurd Malm-
strom
Michigan
ADRIAN
*Maude Metcalf
*M. Rhea Spence
ALLEGAN
*Mrs. H. H. Cook
ALMA
*Minnie M. Green
BATTLE CREEK
*Lovona Johnston
*Winmfred Kingsley
*Harry H. McCracken
*Bertha L. Stroven
*Georgia Wilber
BELDING
*Wm. B. Baker
Retta O. Baker
BENTON HARBOR
*Warren L. Colby
*Bonnie McKahan
*Marion Patton
BERRIES SPRINGS
*Mr. and Mrs. Bert
Summers
BIG RAPIDS
*Ferdinand Warner
BIRMINGHAM
*Margaret Sander
BLISSFIELD
*Mrs. Anson Dickinson
*Arabella Collins Porter
BUCHANAN
*Marion E. VanEvery
BURR OAK
*Maude Baumeister
CADILLAC
*F. J. Radey
CASS CITY
*Lucy G. Lee

CASSPOLIS
*Evelyn Moine
*Mabel Morris
CLARE
*Frances Sempowski
CLIO
J. C. Peters
COLDWATER
*Donna M. Fielder
*Natalie Pague
CONSTANTINE
*Bessie H. Carroll
CRYSTAL FALLS
*Hilda Luoma
DECATUR
*Aileen Bennett
DETROIT
*Mrs. O. M. Bedford
*Mrs. Clarence Benton
*Elsa Bock
*Rachel A. Boldt
Lettie Bradley
Agnes D. Bridgman
Hugo Burger
Detroit College of
Music
*Detroit Institute of
Musical Art
William Fishwick
Adah Hemenway
Jennie C. Kern
Naomi Lookholder
Theophine E. O'Kroy
Mrs. Mae Pearce
*S. A. Ratliffe
*Hugo Richter
*Frank Work Swartout
*E. E. Waldron
*Emma A. Watson
Charles L. Wuertch
*Wilbert L. Yesse
ECORSE
*Florence L. Doughty
*Horace W. Flinders
ESCANABA
Alma Duford Joint
Mabel Summers
FAIRGROVE
May I. Cornell
FENTON
*Alice H. Van Atta
FLINT
*H. Arthur Bachmann
*Bernice E. Gaubatz
FLUSHING
*Mrs. O. M. Bedford
FORDSON
*Florence Carroll
FREMONT
*Jeannie M. Clark
GAINES
*C. Herbert Johnson
GOWEN
*Edwin P. Petersen
GRAND RAPIDS
*Mrs. Xaveria Voigt
*Mrs. C. Hugo Kutsche
*Helen Lanting
*Edith Lewis
*Sister M. Wilhelmina
*Helen Rowe
*Bertha Seckell
*Carl E. Sennema
*Melba Spinney
*Marie Trann
GREENVILLE
*Mary Tefft Curdy
*Blanche de Spelder
*Mrs. C. Hugo Kutsche
HART
*L. E. West
HARTFORD
*Strain
HASTINGS
*Mrs. I. I. Smith
HILLSDALE
*Velma Taylor
HOLLAND
*Johanna Boersma
*Clarence Dykema
*Warren Lacey
*Elaine A. Meyer
HOLLY
*Glady's H. Herrick
*Corrine Markley
*Doris Ione Proctor
HOWELL
*Nina M. Young
HUBBELL
*Sister M. Alonia
HUDSON
Immaculata Haley
IONIA
*Ethel S. Crispin
*Esther R. Thompson
IRON RIVER
*May Friend Jolly
IRONWOOD
*Ravenna Wright

ITHACA
*Nina Burt
JACKSON
*Elio Allingham
*Mrs. Roy J. Cook
J. C. Geiger
Laura M. Koch
Ona Myers
*Eleanor Sullivan
*Dudleigh Vernor
JONES
Virginia Peters
KALAMAZOO
*Hazel I. Dustman
*Frances Leavens
*Victoria McLaughlin
*Walter Fair Pearson
*Leta G. Snow
*Frieda Snow Wall
LAWTON
*Glady's B. Phillips
LINDEN
*Edgar Gene Jobson
MANISTIQUE
*Mary Kirby Mitchell
Anna Corryell Owen
MANITOU BEACH
*William Grinnell
MARQUETTE
R. M. Hamby
MEMONVILLE
*Lisle Prescott
MIDLAND
*Frederic C. Cummings
*Josephine Dehn
*Grace S. Pelton
*Mrs. Eliot W. Rice
MILFORD
*Winifred V. Beam
MONROE
*Henry Schulte
*Garnet Wahl
MONTAGUE
Alma Duford Joint
MT. CLEMENS
*Edna B. Schroeder
MT. PLEASANT
*Edna H. Fuller
MUSKEGON
*Ethel H. Misner
*Sophie Van Andel
MUSKEGON HEIGHTS
*Ruhama Johnson
*Margaret Johnston
NASHVILLE
*Lela Roe
NEW BUFFALO
*Mary Jane Sterling
NILES
*Lena Gardner
*Mrs. V. N. Taggett
N. MUSKEGON
*Mrs. F. A. Schuler
NORWAY
*Kelling
OWOSSO
*Alice Lanting
*Clara A. Kaltrider
PALMYRA
*Ma Louise Wright
PAW PAW
*Glady's B. Phillips
*Melba Spinney
PETERSBURG
*Nellie Myrtle Gordon
PONTIAC
*Grace Miller
*Elizabeth Thorpe
RIVER ROUGE
*Naomi Dory
ROCHESTER
*Mrs. Coot Maud
*Strain
ROYAL OAK
*Dorothy K. Barringer
*Margaret Donaghy
*Royal Oak Conserva-
tory
(Irene Oberliesen)
SAGINAW
*Clara T. Briggs
*I. G. Cummings
*F. Rena Jerome
Lena Kreuchauf
Mrs. Eric Raelia
Marion E. Schaberg
*Orpha B. Vincent
*Louis F. E. Witt
SALINE
*Sister Mills
ST. JOHNS
*Grace M. Coon
ST. JOSEPH
*Wm. F. Herrmann
SAULT STE. MARIE
*Ruby Sass Comb
*Mrs. H. M. Edmonds
*Marie A. Fournier
*Mrs. L. McKee
*Mrs. J. E. Whalen

SCHOOLCRAFT
*Mrs. E. W. Pursell
STAMBAUGH
*Esther Gehloff
TECUMSEH
*Margery B. Lewis
THREE RIVERS
*Mrs. Henry J. Klein-
huizen
TRAVERSE CITY
*Cecilynn May Temple
TROY
*Olive M. Hart
UTICA
*Sarah A. Hixson
VANDALIA
*Virginia C. Peters
VASSAR
*Mrs. D. C. Atkins
*Grace Hough
VERNON
*Mrs. C. L. Crandell
VICKSBURG
*Mrs. Merritt Harper
*Gertrude L. Rogers
WALDRON
*Mary Grace
*Caretta Meyers
WELLSVILLE
*Mac L. Wright
WHITE HALL
*Lucile Lauterberg

Minnesota

AUSTIN
*Sue T. Basford
Mrs. G. H. Ten Broeck
BENSON
*Lillian Roseland
BLUE EARTH
*Marie Hallgren
BRECKENRIDGE
*Sister Laurice
CANBY
*Mabel C. Moon
CANNON FALLS
*Florence A. Haglund
CHATFIELD
*Nona Caw
CHISHOLM
*Inez A. Lundquist
DETROIT LAKES
*Mrs. E. E. Hoit
DULUTH
*Frieda Beier
*Andrew Immonen
ELY
*Impi Keranen
FAIRMONT
*Mrs. S. H. Merrill
FARIBAULT
*Edna K. Kickenapp
FERGUS FALLS
*Halden's School of
Music
(Ruth Halden)
GLENVILLE
*Calla Nelson
GLENWOOD
*Mrs. G. C. Torguson
GRANITE FALLS
*Edythe A. Fortier
HECTOR
*Mrs. J. I. Layman
LE SUEUR
*Verna C. Dressel
LITTLE FALLS
*Sacred Heart Convent
(Sister Annunziata)
MADILLA
*Gertha Jensen
MADISON
*Mrs. H. M. Femrite
MANKATO
*Eleanor Rodgers Gingles
*Anastasia Leonard
MENTOR
*Mrs. W. H. Frey
MINNEAPOLIS
*Angeline E. Buison
Bertha D. Canney
Mrs. Vera Casson
Elizabeth Cohen
Mary Louise Evertz
Anna M. Fardahl
Blanche Harris
*Ida V. Miller
Elsa Caroline Henke
Margaret Johnson
Mrs. Louis J. Maschka
*Isabelle Moga
Emma Olson
May H. Penberthy
Clara Rokstad
Clara Recksteg
Mrs. J. B. Rosenberger
Herman A. Ruhoff
Bernice E. Smith
Edwina Wainman
C. G. Warmelin
Grace L. Zimmerman

NORTHFIELD
Genevieve Folland
Ella D. Hopeman
ORKTONVILLE
*Mrs. Marvel S. Linde-
man
OWATONNA
*Archibald S. Bossart
PAYNESVILLE
*Mrs. Reinhold S. Weber
PERHAM
*Albera Wasie
PIPESTONE
*Mrs. G. W. Winters
RED WING
*Clara S. L. Arndt
SAUK CENTER
*Florence Vogel
SAUK RAPIDS
*Sister De Pazzi
ST. CLOUD
*Mrs. N. Renee
*Sister Vincent of Paul
ST. JOSEPH
*Florence M. Foster
ST. PAUL
*Mrs. Harry L. Johnson
*Harry Kroepf
*William Mountford
*George G. Pierce
*Progressive Music
School
(Anna P. Redlack)
(Eva White Hutzel)
*Myrtle Weed
*Mary R. Willard
SPRING VALLEY
*Iva Cobb Schofield
STAPLES
*Mrs. F. J. Talbot
STILLWATER
*Mrs. W. H. Bastien
TAYLORS FALLS
*Thelma Anderson
VIRGINIA
*Glady's D. Sandberg
WADENA
*St. Ann's Conservatory
(Sister M. Regis)
(Sister Francis
Claire)
WINNEBAGO
*Eva L. Siverson
WINONA
*Arthur Thompson
WILLMAR
*Olive Crosby Kuntz

Mississippi

AGRICULTURAL
COLLEGE
*Mrs. Clay Lyle
BELZON
*Alice S. Roe
BILOXI
*Annie B. Berry
CARROLLTON
*Callie Harvey Bingham
CLARKSDALE
*Ada Chapman
COLUMBUS
*Grey Irion
Sulu C. Stovall
COMO
*Mrs. W. G. Pearce
CORINTH
*Mrs. H. J. Haynes
DECATUR
*Mrs. R. C. Pugh
DURANT
*Mrs. L. C. Lipsey
ELLISVILLE
*Lela M. Buckley
*Mrs. M. P. Bush
FOREST
*Olivia Haralson
FULTON
*Nellie Cowden
GLOSTER
*Mrs. H. B. Miller
Helen Whittington
GREENWOOD
*Anne Hamilton Craig
*Sadie Sykes Deal
Josephine Duggan
CANADIA
*Ida V. Miller
GULFPORT
*Mrs. H. R. Krohn
*Mrs. T. A. Robinson
HATTIESBURG
*Ethel Power
HICKORY
*Lora Belle Gilmore
*Mrs. J. B. Rosenberger
*Virginia Harrington
LAUREL
*Mrs. Chas. E. Beers
*Mrs. T. F. Buntin
*Mrs. C. S. Tuller

MERIDIAN
*Mrs. E. H. Hart
*Kate D. McRaven
MOBILE
*Myrtis Fails
PACE
*Mrs. M. T. Davis
ROCKFORD
*Sarah Baggett
STARKVILLE
*Hortense Leveck
*Mary W. Ward
TUPELO
*Carla Green
*Virginia Mitchell
WEIR
*Mrs. N. C. Moncrief
WEST POINT
*Mrs. Barry Chandler
*Mrs. J. D. Graham
WIGGINS
*Louise Barnett

Missouri

BETHANY
*Lana Frisby
BROOKFIELD
*Beulah B. Hunter
CARTHAGE
*Lucile Barnes
CASSVILLE
*Maud Wilson
CLARK
*Clara Spelman
FESTUS
*Mary Jane Ennis
GRANBY
*Mrs. C. L. Pinnell
GREEN RIDGE
*Ruth R. Gillham
INDEPENDENCE
*Mrs. H. W. Harder
JEFFERSON CITY
*Mrs. Noel Hall
*Scherb Price
*Chas. H. Storm
JOPLIN
*Stella Jones
*Leitha McKenna
KANSAS CITY
*Mrs. Henry C. Alies
*Elizabeth Bloom
*Ruth Burke
*Gertrude Concannon
*Fay Lappin Dawson
*Hans C. Feil
*Opal Martin
*Laura M. McDonald
*Millietta Rendina
Bernice J. Rietz
*Mrs. Eben White
Sloan
*Maud Smith
*Gene Thompson
*Lula M. Tuttle
*Pearl E. Voepel
*Myrtle O. Wood
*Florence Woodard
KIRKWOOD
*Ida Missildine
MACON
*Mrs. W. D. Powell
MADISON
*Elizabeth Atterbury
MOBERLY
*Ida B. Bibb
*Stella Price Eisenstein
*Mrs. Hartley Estill
MONTICELLO
*Celia Gray
MT. VERNON
*Una Hughes Kendall
RICHMOND
*Mabel Swenson
ST. JOSEPH
*George A. Everest
*Margaret Judah
*Birdie B. Lower
ST. LOUIS
*Violet O. Duncan
David F. Earle
*Dorcas Eberley
*Fallert School of Music
(Wade Fallert)
*Hagen Conservatory of
Music
(Hugo Hagen)
*A. Helmholt, Jr.
*John Kessler Studios
(John Kessler)
*Clara Meyer
*Dessie Judith Smith
SPRINGFIELD
*Helen Deaton
*Marcus Peterson
WASHINGTON
*Mamie Ernst
WEBSTER GROVES
*Dorothy Astheim

DOMESTIC BRANCHES—Continued

Affiliated Schools and Teachers (Alphabetically Arranged)

Montana BOZEMAN Lela M. Maxwell BUTTE Helen B. LaVelle Elsa MacPherson Margaret McHale GLENDIVE Mrs. P. J. Moe HAVRE Marie Yoon HELENA Mrs. William Whalen KALISPELL Mrs. G. W. Hunt Irene Nielson LIVINGSTON Jane Ninde MILES CITY Esther Cox Benson MISSOULA Leila McDonald Mrs. Abby Paxton Senior REED POINT Mrs. Beryl Childs THREE FORKS Laura Callaghan	NEBRASKA CITY *Evelyn S. Beard TUCUMCARI *Margarette T. Ziegenbein NEWMAN GROVE Mrs. John Salstrom Mrs. C. L. Samuelson Mabel Vaage NORFOLK *Corra A. Beels NORTH PLATTE *Evelyn Seiler *Mrs. Emma Wanek OAKLAND Ethel Hanson OMAHA Frances Baetens Nettie F. Burke Mrs. C. R. Cameron Amelia Debus *Mrs. R. C. Griffith Gertrude Hoden Othelia Kinder *Helen Mackin *Edith May Miller *Mrs. Stephen Mac Miller Miriam Ruback *Mildred Rush *Esther Harrison Tonner *Georgia Way ORD *Clara Skala PETERSBURG Sister M. Ernesta PIERCE Martha L. Schestedt Sister M. Genima PLATTSMOUTH *Helen H. Becker Lillian Freeman RANDOLPH Sister M. Philippa RED CLOUD *Josephine M. J. Davidson SCOTTSBLUFF *E. H. Lockwood STUART Sister M. Lily TEKAMAH Charlotte Coleman WAHOO Mildred Ethyle Johnson WAYNE Grace Dickson Keyser WESTON Nita Samek WILBER Cora Williams	LAS CRUCES *Mrs. Truman Hall TUCUMCARI *Mrs. Earl George TULAROSA *Annie L. Clark	New York ALBANY *James C. Ackley ALBION *Bernard Lynch ALDEN *Clarabel Wahl AMSTERDAM *Walter B. Haif ANGOLA *Helen H. Watt AUBURN *Nettie M. Mahaney BATH Sarah E. Babcock FLORA KNIGHT MAYER BEMUS POINT Martinette D. Drayton BERGEN *Mrs. A. C. Richards BINGHAMTON *Ruth Bornmann *Mary Alice Brownlow *Sonja Feinblom *J. Emery Kelley *Sara Harkness Kirby *Claude Warren, Jr. BRONX *Bernard Kirshbaum BUFFALO Leonard Adams Erma H. Becker William Benbow Grace H. Chester *Oliver G. Cleverley Marguerite C. Davidson Edmond Dowd Nellie M. Gould Elmer G. Henshaw *Henry M. Hoffman Peter J. Jankowski Ethel Lowry Kraus Inez Whittaker Larkin Gladya A. Maske Lauretta Allyn Meyers Flora J. Miller Mildred A. Moritz Madeline E. Murphy Katherine G. Randall Alice M. Richards *Herman E. Schultz Blanche Sincouse Gertrude Thomas Molly Thompson *Clara S. Cook J. Hart Kinsey CARLTON *Bernard Lynch CATTARAUGUS *Alice L. Smith CHERRY CREEK Mary J. Johnson CLARENCE *Florence Brunck CLINTON *Florence P. Jones COLDWATER Hazel Allen CORTLAND *Maude S. Edgbert DANVILLE Elizabeth Endress Huldah Randall DE RUYTER Della Hinds Fox Mrs. J. C. Stillman ELLICOTTVILLE *Nellie M. B. Fraser ELMIRA *Kathryn S. Catlin *Georgiana Palmer ENDICOTT *Beatrice G. Galloway *Felice Giordano *Jess Weston FRANKLINVILLE *Marjorie K. Graves FULTON David B. Carroll GOUVERNEUR *Jean Clark Boyle GOWANDA *Alice T. Bixby HAMMONDSPORT Fanny Talmage Abert *John Jacobus HAVERSTRAW *Fred N. Rehn HOLLEY *Hazel M. Turner	HOMER *Edythe M. Ring HORNELL Bertha Cadogan Fanny H. Phillips John W. Surra HUDSON *Julius J. Thomsen JAMESTOWN Flavia Corley *Esther E. Elf *Leola M. Fairchild *Anna A. Knowlton *James W. Conservatory of Music (Samuel Thorstenberg) JOHNSON CITY *Thelma G. Howell *Estelle King KENMORE Otto Philip Hager KINGSTON *Harry P. Dodge LACONA *Mrs. H. Floyd Blount LANCASTER Philip L. Kraemer LINCOLN Leta A. Parslow LYNDONVILLE *Flora Welch LYONS *Clara E. Miley MARATHON *Estelle King *Flora T. Knapp Mary Beach Shevailer MEDINA *Mrs. Ernest Hart *Anna Marino *Harold Suzanne MIDDLEPORT Helen H. Mitchell MT. MORRIS Margaret Louise Pitt NEWARK *Mary E. T. Ball NEW YORK CITY *Julian S. Acosta Mabelle Nash *Daniel Popovich NIAGARA FALLS Ruth Bilet Davis *Christie Ann Dove-smith Ethelida Drummond Mary M. Kain Sybil I. Simmons N. TONAWANDA Mrs. Vernon W.	WILLIAMSON Inez M. Clark WILLIAMSVILLE Mrs. George L. Maurer *Estelle Seif *Earl Wirtmayer	North Carolina BREVARD Clarice L. Lemons BURLINGTON *Daisy Carrigan FREMONT Ivor Aycock GOLDSBORO *Walter Hamer GREENSBORO *Mrs. Jess Alderman Anna Nell George Florence Hunt HICKORY Helen Stahler HIGH POINT *Mrs. Sidney Gayle RALEIGH Lovie Jones	North Dakota BATHGATE Gertrude Lane ELLENDALE Jessie Howell Dunphy EMERLIN *Hilma S. Larson GRAND FORKS *Flossie Reiton HANKINSON Evangeline M. Green HETTINGER Pearl Y. Herrick JAMESTOWN *Marjorie Kurtz Anderson MINOT *Mrs. D. Jessie Finley MONANGO Harriet M. Caldwell Vivian Moe WAPETON *St. John's School (Sister M. Clement) *Walpole Conservatory of Music (George E. Miller)	Ohio ADA *Helen Fisher AKRON Ruth Beveridge Berry *Francesco de Leone *Grace Edwards Blanche J. Engler Alma May Frase Mrs. G. H. Gillespie Edna Z. Heffley *Anna N. Ingersoll Lois Jackson Pauline Bierly Leffler Mrs. Claude B. Matz Helen J. Popovici Gladya Hamilton Silver Beulah Slaughter Edna Smith *Blanche M. Stewart Blanche Stube *William Van Steenhoven *Genevieve M. Williams *Julia Witter ALLIANCE *Florence Henry *Mrs. Gayle Miller AMANDA *Mary B. Hewetson ASHLAND *Zora I. Buchanan Helen M. Rice *Florence Taylor Janet Vinosdall BATHMORE *Elsie M. Neff BARBERTON Mrs. John F. Heimer Florence Kriehbaum Ida Howe Monk Amanda Stadtmiller *Georgette Warner *Mrs. Thomas Watson *Luella Yacker BATH Ruth Hopkins Scott BELLEVILLE Adda Edy BELLEVUE Margaret Callaghan Friend	BOLIVAR *Ruth Kline Hildt BUCYRUS *Mrs. J. W. Loomis Burlingame CAMBRIDGE *Dorothy D. Boyd CANTON Laura Armitage Anna Bramhall Gladya C. Cook Mrs. Homer C. Dicks Nellie J. Dretke Evelyn Greene Mrs. J. F. Koehler Clifton H. Koffel Louise I. Miller Maggdalen Mueller Alice N. Nudo Florence M. Nusly James Peterman *Mrs. W. S. Poorman Helen J. Popovici Margaret Raz Sister M. Bonaventura *Evelyn Meyer Sister M. Gregory Anna Swallen *Mrs. Austin Walter Laura Verne Zellers CHAGRIN FALLS *Florence M. Barrows CINCINNATI *Winifred Daniels *Lucile Meyer CIRCLEVILLE *Abbe Mills Clarke CLEVELAND Laura Louise Bender *Annette Bour *Harry D. Fay CLEVELAND HEIGHTS Dora E. Buck COLUMBUS *Stella Bishop Alden *Nina D. Beatley *Dolores R. Brooke *Ethel B. Clarke *Corra Kurtz Coffinberry *Willard Ewing *E. W. Fenstermacher *E. W. Hayes *Bessie Don Parkins *Sara Reynard *Marjorie Rockenfeld *Edna Stainbrook *Hazel Louise Woolley *Pauline Young *A. F. Zeller CONNELT *Lyda M. Blakelee Miss E. Tracy Brown Charlotte Campbell COSHOCTON *Harold E. Stevenson CRESTLINE *Essie Todd DAYTON *Vernon E. Fries *William H. Fries Etta Addie Hill *Emma McClure *Miami Valley Conservatory of Music Forrest Stump DELPHOS Esther Cordell DELTA Gartha Fern Watkins DOVER *Gilbert Roehm EAST AKRON *Mrs. J. A. Minarde *Walter Orr Mrs. E. L. Roberts Nellie Whittaker EDON *Mildred Kaiser ELLETTSVILLE *William Haller ELYRIA Mrs. A. J. Melton FINNEY *Anna Mary DeVerte Lottie G. Walters FT. RECOVERY Florence Kriehbaum FOSTORIA *Lucille Danner *Mrs. Grover England Helen Marie Myers *G. A. Ward FRANKLIN *Mrs. S. Stahl FRANKFORD *Edna L. Bruner Lucy B. Garvin GAMBIER Burdette Lepley
--	--	---	--	--	--	--	---	--	---

DOMESTIC BRANCHES—Continued

Affiliated Schools and Teachers (Alphabetically Arranged)

Ohio—Continued

GENOA
Nelle Wood
HAMILTON
*Hazel M. DeVou
Neil Miliken Hull
Willie Eyre Ulnschneider
HARTVILLE
*Lucile C. Smith
KENT
*Edith Falls
LAKEWOOD
*Ethel Byler
*Frances Richardson
*Mrs. Fern Wilkinson
LANCASTER
*Harriet Clyde Garlinger
*Bessie Emily Tarr
LA PORTE
*Mrs. Eric D. Chapman
LIMA
Bernadette Blanchard
*Margaret L. Deniston
Leona Feltz
Edith Jones
Wilbur L. Lindsey
Sister Marie Celeste
LISBON
*L. C. Kessler
LORAIN
*Eather D. Battenhouse
*Kathryn G. DeVeny
*Glady's Kishman
*Mary Munyon
*Glady's Wise
LOUISVILLE
Kathryn Immel
MALVERN
*Mrs. George W. Moore
MANSFIELD
*Mrs. Zora Buchanan
*E. T. S. Cliffe
MARIETTA
Beulah McKinney
MARION
*Mrs. John F. Lacey
*Mary G. Montgomery
*Mrs. Harry Williams
MARSHALLVILLE
*Eather Wagner
MARTIN'S FERRY
Helen V. Hadzell
*Jessie Alma Wolfe
MARYSVILLE
*Jennie Sherwood
MASSILLON
*Mrs. Thomas Stephan
*Mary C. Warth
MEDINA
*Helen Reed
MIDDLETOWN
*Hazel M. DeVou
MT. STERLING
*Eleanor Armstrong
MT. VERNON
*Lillian Minard
NEWARK
*Bertha May Doomy
NEW LEXINGTON
*Harriet Clyde Garlinger
NEW PHILADELPHIA
*Ermilla M. Endres
*Virginia R. McCullough
NEW WASHINGTON
Sara Naomi Wert
NILES
*Mrs. George A. Bretz
*George A. Bretz
NORTH JACKSON
*H. B. Baughman
NORWOOD
Sister Margaret Louise Carr
OAK HARBOR
Mabel Alexander
OAKWOOD
*Mrs. W. H. W. Webster
OBERLIN
Mr. and Mrs. V. V. Lytle
OHIO CITY
*Lucille Hoffman
OTTAWA
*Catherine Buescher
PAINESVILLE
Helen May Duncan
PAULDING
*Alice Cookingham
PAYNE
*Beulah Ellick
PETTISVILLE
*Emma A. Frey
PIQUA
*Lorraine Miller
PLYMOUTH
*Mrs. A. T. Shafer

POMEROY
Alfred Genheimer
PORTSMOUTH
*Charles H. Kalb
*Dorothy Kinsey Knost
*Sister Mary Seraphine
ROCK CREEK
*Helen M. Sperry
ROSEVILLE
*Mrs. John Blake
ST. MARYS
Bernice Baxter
Zella Dixon
Amanda Limbacher
Subbs
SALEM
*Florence Schnorrenberg
SHELBY
*Bertha Palmer
SHERWOOD
*Helen Beavers
SPRINGFIELD
Helen Jeannette Lutz
Emma Kiefer Timmerman
Sonora Trout
STUEBENVILLE
*Robert B. Martin
TIPPIN
*Oliver S. Irvin
TOLEDO
*Mrs. Oscar M. Baker
LORAIN
*Alice Corfman
*Amy Decker
*Mrs. Norman Hobson
Luella N. Jelly
Lina C. Keith
Amy Almrath Kohler
Calla Lee
Margaret Ream Lee
Sabine C. Lohmann
*Jennie Dean Rogers
Louise Runkle
Ethel Strang
Harriet Marguerite Taylor
*Alice S. Van Allen
*Glady's S. Wickenden
TORONTO
*Mrs. Howard Walker
TROY
*Florine Frank
*Mrs. Murlon Isenbarger
UNIONTOWN
*Mary Frances Saffles
URBANA
Alice C. Longfellow
VAN WERT
D. K. Antrim
D. H. Krieger
Hattie Counsellor
Kreisel
Gladys Stemen
WALTON
*Florence F. Miller
WADSWORTH
*Edna R. Mills
*Mrs. David Nolf
WAPAKONETA
*Thecla Stueve
WARREN
Laura Kifer
*Lois V. McTaggart
Mabel C. Wagner
WASHINGTONVILLE
Birdie E. Brady
WAUSEON
Loraine Burr
Helen L. B. Shull
WAYNESVILLE
Harry O. Wagner
WEST LA FAYETTE
*Mary Edwards
*Elizabeth McCall
WEST RUSHVILLE
*Rhea E. Dilger
WEST SALEM
*Mrs. Pearl H. Myers
WHEELERSBURG
*Mrs. B. U. Howland
WOOSTER
*Mae Haeger Armstrong
WORTHINGTON
*F. H. Bond
YOUNGSTOWN
*George J. Assion
*Geraldine Edwards
*Elsie S. Warburton
ZANESVILLE
*William S. Bailey
Vera Spangler

Oklahoma

ANADARKO
*Elizabeth Lawrence
ADMORE
*Mrs. Lorenz Boyd
*Emanuel Lowenstein

BARTLESVILLE
*Ursuline School of
Music
*Mrs. Mary Angela
*Lucille Weston
*Woodring Studio of
Fine Arts
*Anita Woodring
(Helen Hall)
CARMEN
Aleen Bogardus
CHANDLER
*Mrs. Leo Martina
Smith
DAVIS
*Mrs. Clay D. Howell
DUNCAN
*Nell I. Morton
DURANT
*Harold H. Leake
ENID
Verda E. Miller
GUTHRIE
*Corinne Stevens
HOLDENVILLE
*Mrs. Lewis C. Lawson
IDABEL
*Mrs. Lee Martin
LAWTON
*Mrs. S. R. Harper
MARIETTA
*Mrs. T. B. Burney
*Carol K. Peters
*Pennyanna Institute
of Music
*Carol K. Peters
(Reynold C. Peters)
ALTOONA
*The Barker School
(Harold H. Barker)
AMBRIDGE
*Milton T. Pickles
ASHLAND
*Wagner School of
Music
BANGOR
Evelyn B. Keat
BEAVER
*Belte Andriessen
*Edwin C. Reid
BELLEFONTE
*Dorothy Bible Schad
BOSWELL
*Music and Allied
Arts
(A. M. Larzen)
*Berencie Rice
*Mary E. Sater
*E. R. Smizer
*Mabel VanLindsey
PAULS VALLEY
*Mrs. A. S. Spangler
PAWBUKA
*Lemuel J. Childers
*Ann Tigone Estes
PERY
Minnie Cramer
SAND SPRINGS
*Mrs. G. H. Stigler
*Minnie B. Verbeck
SAPULPA
*Bertha M. Newton
SHAWNEE
*Mrs. Ora Hart
*Wendell
SULPHUR
*Virginia Castel
TULSA
*Grace Copeland Campbell
*Louise W. Crossland
*Nina K. Ireland
*Wilhelm Schmidt
*Margaret A. Simms
*Sister M. Genevieve
*Lucille Trimble
WILBURTON
*Ida Rockett
WYNNWOOD
*Irene Rollow

Oregon

ASHLAND
*Frieda E. Bratzel
ASTORIA
*Elizabeth Smithner
BAKER
Birdie Bushnell
GRAND PASS
*Jessie W. Knapp
HOOD RIVER
*Mrs. Zoloto C. Sloum
KLAMATH FALLS
*Edith Johnson McLeod
*Marie Obenchain
*Frances Woods Woodruff
*A. W. Don J. Zumwalt
MCMINNVILLE
Sister M. Florencia
MEDFORD
*Eleanor Fraumfelder
METOLLS
*Jessie E. Marsh
MILWAUKIE
*Mildred Walton
PORTLAND
*Eleanor C. East

*Genevieve Fisher
*Ruth Bradley Keiser
*Kathryn Lasley
*Virginia Lyman
*Lillian Pettibone
*Anna L. Scates
*Bernice S. Sisson
*Mrs. N. H. Thornton
*Helen Tjernlund
*Marjorie Trotter
*Stanley E. Walker
*Wickersham Studios
SALEM
*Mrs. David Eason
*Frances Virginie
Melton
SILVERTON
*Gertrude L. Cameron
TILLAMOOK
*Mrs. J. C. Holden
*Marie S. Holden

Pennsylvania

ALLEGHTOWN
Warren F. Acker
*Herbert Gernert
*Blanche K. Goggin
D. G. Knauss
Edgar B. Kocher
*Pennsylvania Institute
of Music
*Carol K. Peters
(Reynold C. Peters)
ALTOONA
*The Barker School
(Harold H. Barker)
AMBRIDGE
*Milton T. Pickles
ASHLAND
*Wagner School of
Music
BANGOR
Evelyn B. Keat
BEAVER
*Belte Andriessen
*Edwin C. Reid
BELLEFONTE
*Dorothy Bible Schad
BOSWELL
*Music and Allied
Arts
(A. M. Larzen)
*Berencie Rice
*Mary E. Sater
*E. R. Smizer
*Mabel VanLindsey
PAULS VALLEY
*Mrs. A. S. Spangler
PAWBUKA
*Lemuel J. Childers
*Ann Tigone Estes
PERY
Minnie Cramer
SAND SPRINGS
*Mrs. G. H. Stigler
*Minnie B. Verbeck
SAPULPA
*Bertha M. Newton
SHAWNEE
*Mrs. Ora Hart
*Wendell
SULPHUR
*Virginia Castel
TULSA
*Grace Copeland Campbell
*Louise W. Crossland
*Nina K. Ireland
*Wilhelm Schmidt
*Margaret A. Simms
*Sister M. Genevieve
*Lucille Trimble
WILBURTON
*Ida Rockett
WYNNWOOD
*Irene Rollow

EMPORIUM
*Mrs. Floss Van Wert
ENID
*Mabel Edwards
ERIE
Thekla Abbott
Anna A. Prader
*Bernice S. Sisson
Delano Music School
Ruth Evelyn Dougherty
*Rose S. Fiorelli
Mabel Irene Johnson
Thora Lauterbach
Viola Livingston
Florence Pelton
Alice Sloan
Marie E. Zimmerman
FAIRCHANCE
*Ester Ridenour
FRANKLIN
*G. Raymond Bell
GARRETT
Elsie S. Kooser
HARRISBURG
*Carl Leggett
*Vivian Eves Steele
HAZLETON
*Girard's Hazleton
Cons. of Music
(Mrs. Nicholas
Girard)
HOLLIDAYSBURG
*McGiffin Music Studio
(Clara McGiffin)
HOULTDALE
Jennie C. Clark
HUMMELSTOWN
*Mrs. Robert M. Bair
INGLESIDE
Annie G. Rayburn
IRWIN
Marie L. Carroll
JEANETTE
Leanne W. Stirling
JERSEY SHORE
*Jacques L. Goodman
*Mary Mulliner
*F. L. Schoendorfer
JOHNSTOWN
*Johnstown College of
Music
LANGHORNE
Jennie C. Clark
LEBANON
*Lebanon Institute of
Musical Art
(Johann M. Blose)
LEETSDALE
Maud McQuaid
LIGONIER
Oliver Stom
LILLY
Martha A. Hite
LOCK HAVEN
*Leo A. Caprio
*Mabel E. Knecht
MACUNGIE
*Ella M. Seem
MARTINSBURG
J. C. Bolger
MCKESPORT
Hazel Speer
McGRANN
*Dessie D. Yates
MCDONALD
Adolph Mayer
MERCERSBURG
*Mildred E. Armstrong
MIDDLETOWN
*Agnes Matula
MILTON
*Margaret K. Rosche
MONESSEN
Edgar E. Drake
MONONGAHELA
Luella M. Scott
MT. CARMEL
*E. Mary Wendrop
MT. JEWETT
*Mrs. I. S. Crouse
MT. LEHANN
Rosetta B. Boyer
NANTICOKE
*Isaac George Saye
NATRONA
F. M. Singer
NEW BRIGHTON
*Carrie M. Miller
NEW CASTLE
*Kathryne Nessel Allen
*Albert A. Taylor
NEW KENSINGTON
*Blanche Hill
*Carl Leggett
NEW SALEM
Nora D. Johnson
NORRISTOWN
*Fidelis Studio of Music
(Eleanor L. Fields)

NORTH EAST
Helen Wells Nash
NORTH GIRARD
*Mrs. R. Ernest Blakely
OIL CITY
*Fred C. Ingraham
Euphrasia McCullough
OKEOLA MILLS
Charlotte Neff
PHILADELPHIA
*Cooke Music School
(William B. Cooke)
*Helen Dieckrich
Elvora Hepler
*Evelyn L. Massa
Mrs. Ernest Pechin
*Louise Christine Rebe
*Newell Robinson
*Ralph H. Zigler
PHILIPSBURG
Nancy Holt
PITTSBURGH
Mrs. J. H. Esser
Mrs. Foster J. Hartman
Eda A. Kropf
*Carl Leggett
*Abraham Litow
Margaret Llewellyn
PT. ALLEGANY
*Mary E. Steele
PUNXSUTAWNEY
Mrs. W. H. Hill
Lucille Zeidler
READING
*Earl F. Bentel
*Mrs. Gordon D. Richardson
*Chester Wittell
RENO
*Byron Nemacher
RENOVO
*Mrs. P. W. Burt
*Dorothy F. Leisher
REYNOLDSVILLE
*Mae Henry
RIDLEY PARK
Elizabeth Dorothy Ernst
ROCHESTER
*Earl F. Bentel
*Ruth Korman
SAYRE
*Susquehanna Institute
of Music
SCENERY HILL
H. P. Gerlein
SCHUYLKILL HAVEN
*Jewell Edwards
SHAMOKIN
*Claude H. Ready
SHINGLEHOUSE
*Nellie M. Brate
SLATINGTON
*Velma L. Oswald
*Harry A. Steckel
SMETHPORT
*Florence Bright
*Ellanorah C. Richards
SMICKSBURG
Clara Elkin
*Hazel I. Richards
STATE COLLEGE
*Margaretta May
STROUDSBURG
Blanche Sigfus
SUMMERTOWN
Ella Carrier
SUNBURY
*W. R. Rothenberg
SUSQUEHANNA
H. S. Warner
SWARTHMORE
Helen Eugene Parrott
TARENTUM
Laura M. Adams
*Carl Leggett
TITUSVILLE
*Louise C. White
TUSCARORA
*Oliver J. Yost
TYRONNE
*Eugene Dayton
UNION CITY
Myra A. Duncombe
UNIONTOWN
*Ethel Gerwig
*Henry Gerwig
WARREN
*Rachel W. Eaton
WASHINGTON
Mrs. Harry E. Longdon
WELLSBORO
*Randolph Marble
*Katherine C. Gentry
WEST BRIDGEWATER
*Mary U. Hart

DOMESTIC BRANCHES—Continued

Affiliated Schools and Teachers (Alphabetically Arranged)

<p>Pa.—Cont'd.</p> <p>WILKES-BARRE *Ruth Lillian Barnes</p> <p>WILKINSBURG Marianne Genet Arelia Hunsberger</p> <p>WILLIAMSPORT *Blanche M. Applegate *Gordon Breacy *The Harold Pries School of Music (Harold Pries) J. Maynard Wettlauffer WILMERDING Margaret E. George</p> <p>YORK *J. Frank Fryinger</p> <p>YOUNGWOOD Emma Getrude Roberts</p> <p>Rhode Island</p> <p>EAST GREENWICH *Mabel Palmer WOONSOCKET *Alfred T. Plante</p> <p>South Carolina</p> <p>BEAUFORT Mary M. Kindelberger</p> <p>CORONADO *Lewis E. McCravy</p> <p>GREENWOOD *Wald B. Nielson</p> <p>PELZER Mrs. Thomas J. Crane</p> <p>South Dakota</p> <p>ALBERDEEN Violet Beechey Lola A. Bush Mrs. Earl A. Carlson Mary Granger Madge King Johnston Ruth Malay Mrs. D. J. Moriarty Violet Neddersen Edna M. Olson Walther Pfitner Mae E. Rummell</p> <p>ARLINGTON Jennie Rasmussen</p> <p>BOWDLE Mrs. Theo. Jones Gross</p> <p>BRADLEY Jean McKenney</p> <p>CANTON *Jennie Paulson</p> <p>CENTERVILLE Fannie L. Burns *Hilma Johnson</p> <p>CLARK Verna Headley Musette S. Jones</p> <p>DEADWOOD *Olive Lathrop</p> <p>GAYVILLE *Hilma Johnson</p> <p>GEDDES Sister M. Carentia Sister M. Samuela</p> <p>GROTON Laurina A. Klug</p> <p>HENRY Laura Ginter</p> <p>HOT SPRINGS Mrs. J. C. Spencer</p> <p>HURON Gertrude A. Null Mrs. T. J. Wood</p> <p>KIMBALL Cora L. Skinrood</p> <p>LEAD *Dorothy Lieke Branch Alice Treweek</p> <p>MADISON Mrs. George Koch *Nettie Theroux</p> <p>MOBRIDGE Lillian Doud Alice Ray McCauley</p> <p>ORIENT Grace Gunnison</p> <p>RAYMOND Catherine Kunkle</p> <p>SIOUX FALLS *Leon S. Griffith Louis G. Piaggi</p> <p>SPEARFISH Ruth Lemen</p> <p>WATERTOWN Mabel MacIntosh</p> <p>Tennessee</p> <p>COLUMBIA *James Neeld GALLATIN *Mrs. R. F. Boddie</p>	<p>HENNING Margaret Roy</p> <p>JACKSON *Mrs. M. Warren Prince</p> <p>MEMPHIS *Mrs. J. T. Fowles *Peter Marchesio *Patrick O'Sullivan *Nell Sanders *Mrs. R. B. Sims, Jr. *Sister M. Aniceta *Virgil Smith *Mr. and Mrs. J. Paul Stalls</p> <p>NASHVILLE *Mrs. J. Edgar Meggs Fanny R. Porter *Louise Shields UNION CITY *Miss Willie Belle Mayes</p> <p>Texas</p> <p>AMARILLO *Grace E. Hamilton *Margaret Harris Juanita Henderson *Mrs. T. W. Jenkins *Millicent Lahm *Lilly Larsen *Mable Rowen</p> <p>ATLANTA *Mrs. Oval Harden</p> <p>CHILDRESS *Carrie Mae Diggs</p> <p>CORPUS CHRISTI *Mrs. Arthur A. Harris *Mrs. C. N. Wylie</p> <p>CORSICANA *Mrs. L. A. Rutherford</p> <p>DALLAS *May Whitney Farnham *Gertrude Mann *Grace Switzer *Selma E. Tietze</p> <p>EL PASO *Walter Davis *Ruby K. Evans *Esther H. Lama *Mrs. Sam F. Means *Grace E. Taylor</p> <p>FERRIS Bell Webb Cox</p> <p>FORT WORTH Mrs. H. P. Ross</p> <p>GILMER *Pearl Daniels</p> <p>GROOM *Juanita Henderson</p> <p>HOUSTON *Robert Grace Duerer C. A. Hammond *Lora H. Nelson *Mrs. H. J. Thompson</p> <p>LAREDO *Lillian Ellis</p> <p>LUBBOCK *Ethel Miller</p> <p>PAMPA *May Foreman Carr</p> <p>SAN ANTONIO *Evelyn Harvey *Diana Scllards Lan- caster</p> <p>*Mrs. G. Morgan Nigdi Mrs. J. K. Rascoe Mrs. J. E. Sills</p> <p>SINTON *Esther Beever</p> <p>TROUP *Mrs. Henry M. Ward</p> <p>TYLER *Mrs. C. E. Dewiese *Mrs. Louis Durst *Jessie McCaslin</p> <p>WASKOM *Mary Lewis Mustin *Sara T. Pollard</p> <p>Vermont</p> <p>ST. JOHNSBURY Katherine C. Folsnaby</p> <p>Virginia</p> <p>ALEXANDRIA *Phila Belle Burk</p> <p>CERRYDALE *Virginia T. Bestor</p> <p>CLARENDON *Mabel Potter Payne</p> <p>HARRISONBURG *Pabst School of Music (Camillo Pabst)</p> <p>LYNCHBURG *Margaret Fleming *Cheatham *Marie B. Neubauer</p>	<p>RICHMOND Minnie M. Cogbill Ernest H. Cosby F. Flaxington Harker Mrs. F. D. Hequem- bourg Mrs. Geo. T. Rowe</p> <p>ROANOKE *Blanche Deal *Lorette C. Grayson</p> <p>SALEM *Robert Carter *Mrs. G. G. Peery</p> <p>STAUNTON *Institute of Musical Art (Martin G. Manch)</p> <p>Washington</p> <p>ABERDEEN *Mrs. John Tenwick</p> <p>ANACORTES *Glen L. Bias *Mrs. L. P. Gieret *Mrs. A. S. Piles</p> <p>BELLINGHAM *Juanita Wilbur Chase</p> <p>BREMERTON *Bertha L. Croes</p> <p>CHEHALIS *Sara J. Bushnell</p> <p>COLFAX *Juanita Gerber *Elva Hindman Lynch</p> <p>COLLEGE PLACE Bernice Bernard</p> <p>HILLARY *Margaret Anderson</p> <p>KALAMA *Warren Brian Cross</p> <p>KENT *Glady Lucile Murbach</p> <p>MONTESANO *Catherine Coleman</p> <p>MT. VERNON *Freda E. von Jessen</p> <p>MUKILTEO *Grace Millican Moe</p> <p>OLYMPIA *Helen B. Parker</p> <p>PT. TOWNSEND *Francis Marie Short</p> <p>PULLMAN *Emma Hoffman *Mrs. Artie Ellen Kelley *Louise H. Watke</p> <p>RENTON *Roberta Grace Dexter ST. JOHN *Nora Nickerson</p> <p>SEATTLE *Irene Baltrusch *Ora Eller Bartine *Ailsa T. Bonney *Rita E. Bowen *Mrs. John S. Briggs *Gertrude Drumm *Harry Kramoff *Herbert Malloy *Olga V. Marvis *Pearl E. McDonald *Paul Pierre McNelly *Ethel Poole Morck *Mozart Conservatory of Music (Renée Raymond)</p> <p>*Mr. and Mrs. Silvio Risegari *Irene Rodgers *Maud E. Ross *Harriet Roney *Hazel Smith Willeke</p> <p>SHELTON *Leonora Shelton</p> <p>SNOHOMISH *Johanna S. Trowbridge</p> <p>SPOKANE Mrs. E. S. Eyer *Blanche E. Rundberg *Edgar C. Sherwood *Vesta M. Westphal</p> <p>SUMNER *Bertha Dew Trubshaw</p> <p>SUNNYSIDE *Emma D. Hoffman</p> <p>TACOMA *Greta Thompson Clare</p> <p>*Jeanne Farrow Kimes *Alta L. Mercer *Edna Robertson</p> <p>TOPPENISH *Ralph O. Short</p> <p>YAKIMA *Halsey Carstens *Gertrude Louise Miller</p>	<p>West Virginia</p> <p>BLUEFIELD *Bess Davis Barton *Mrs. Harry Holmes</p> <p>CLARKSBURG Maud B. Walsh</p> <p>FAIRMOUNT Iva Ginkel *Blanche Deal *Mrs. Harold W. Hef- ner</p> <p>HUNTINGTON *Dorothea Sandman Beuhring Mrs. C. B. Lauhon *Bernice Rogers Lelia Butler Stafford</p> <p>MORGANTOWN Blanche Protzman</p> <p>MOUNDSVILLE Helen Henderson Emma Moore Scott</p> <p>PARKERSBURG *Dolores Deem</p> <p>PHILIPPI *Mrs. Norris G. Vaughn</p> <p>SALEM *Frank W. Roberts S. O. Dew</p> <p>WHEELING Carl Nestmann</p> <p>Wisconsin</p> <p>ADAMS Mrs. Ed. Hallahan</p> <p>ALMA CENTER Mrs. H. J. Hart</p> <p>ALTOONA *St. Mary's Academy and High School (Sister M. Leon- ette)</p> <p>ANTIGO Howard Jackel</p> <p>APPLETON *Ruth G. Trettian</p> <p>AUGUSTA Vera W. Cameron</p> <p>BARABOO *Elen H. Potter *Ethel Rodwell Sister Mary Rita</p> <p>BEAVER DAM Anna Hanneman Harder</p> <p>BELOIT Lelia Goodmanough *Mrs. Emma E. Smith</p> <p>BERLIN *Cora M. Wiesender</p> <p>BLACK EARTH Lillian Norslin</p> <p>BLACK RIVER FALLS Hazel Bowen</p> <p>BROOKLYN *Benno F. Kupfer</p> <p>BURLINGTON Erna McLaughlin</p> <p>CAMBRIA *Helen Roberts</p> <p>CAMPBELLSPORT Sister M. Caritina</p> <p>CHILTON *Elizabeth Groetinger</p> <p>CHIPPEWA FALLS *Duane Gillette *Max Scholdt</p> <p>CLINTON *Hazel Wolfram</p> <p>CLINTONVILLE *Meta Zachow</p> <p>COLOMA Theodora Behrens</p> <p>COLUMBUS *Elen E. Crombie Gura Lynott *Eather Stuchmel</p> <p>CUDAHY *Paulina Attermeier</p> <p>CUMBERLAND *Meta Peterson</p> <p>DELAVER *Benno F. Kupfer</p> <p>EAU CLAIRE Anna Liebau Ernest H. Miles *Mathilda A. Rishvold</p> <p>ELLSWORTH *Louise Lundberg Nelson</p> <p>EMBARRASS *Viola Buntrock</p>	<p>EVANSVILLE *Lou Howland *Benno F. Kupfer</p> <p>FOND DU LAC Emily Hauer Nellie M. Holland Angeline Komers Antoinette Ward Lillian H. Woods</p> <p>GENOA JUNCTION Helena Spohnoltz Weber</p> <p>GRANTON Vera B. Crandall</p> <p>GREEN BAY M. Grace Church Glady Jonte *Margaret S. Martin</p> <p>HILLSBORO *Pearle Manhart</p> <p>HORIZON *Howard J. Freiwald Dena L. Knop</p> <p>HUDSON *Amy Christopherson *Alice V. Christman</p> <p>JANESVILLE *Benno F. Kupfer Mrs. George Welch</p> <p>KENOSHA *Congdon Conservatory of Music and Dram- atic Art *Lelia Lloyd Dennis *Hazel Knitter *Carolyn Reiser *Ida Lydia Ryden</p> <p>LA CROSSE Elizabeth Ida George Charles Weiss</p> <p>LAKE GENEVA Mrs. R. C. Cobb</p> <p>LANCASTER Mabel Stone Pennock</p> <p>LUXEMBURG *Hilda Schwab</p> <p>MADISON Irene Reading Laura A. Richards *Wisconsin School of Music (Elizabeth Buehler)</p> <p>MANAWA *Honor Walch</p> <p>MANITOWOC *Mel Kitzow</p> <p>MARINETTE Sadie Lewis *Stella M. White</p> <p>MARKESAN *Elvira Luedtke</p> <p>MEMONONIE FALLS *Mrs. Rollin P. Lentz- ner *Lucetia E. Perrin</p> <p>MEMONONIE *Faith Louise Jernson</p> <p>MILWAUKEE *Tessie Lucke *John Matzek Sister Mary Davidica</p> <p>MONROE *Arline Berkeley</p> <p>MOSSINE *Mrs. Pearl Durkee</p> <p>MT. HOREB *Frederick H. Hanne- man</p> <p>NEENAH *Emlyn Owen</p> <p>NEILLSVILLE *Mrs. Jesse Scott</p> <p>NEW GLAUS *Alice Freitag</p> <p>NEW LISBON Eva Reetz</p> <p>NEW LONDON *Sister Theophane</p> <p>NIAGARA *Ruth H. Anderson</p> <p>OSKOSH *Lula Blissett Lisk *Harriet Wilkins</p> <p>OSSEO Eleanor Piske</p> <p>OWEN *Mrs. A. M. Wilson</p> <p>OXFORD Isabel Franklin</p> <p>PESHTIGO Nelle B. Mellen</p> <p>PHILIPS *Eliza Lowe</p> <p>PLYMOUTH *Hildegard Wilson</p> <p>PRAIRIE DU SAC M. Rose Koch</p>	<p>RACINE *Gere Conservatory of Music (Earl S. Gere) *Lily A. Pearce *Frederick Schulte *Mrs. H. A. Thomp- son</p> <p>RANDOLPH *Mabelle Thompson- Fowle</p> <p>REEDSBURG *Eugenia Lassalette Ellenberg</p> <p>RHINELANDER *Jane Hampton *Mrs. T. R. Welch</p> <p>RICE LAKE *Gwen Rudall</p> <p>RICHLAND CENTER *Alvira I. Snodgrass</p> <p>RIO *Mabelle Thompson- Fowle</p> <p>RIVER FALLS *Cara Amelia Wharton</p> <p>SHAWANO *Mrs. Frank Schweers</p> <p>SHEBOYGAN Winifred Webb Hille *Mrs. J. A. Kress *Louise Rowlands Mudley</p> <p>SPARTA *Leah Doane *William D. Totten</p> <p>SPRING VALLEY *Mrs. J. A. Nyeggen</p> <p>STANLEY *Duane Gillette</p> <p>STEVENS POINT *Frances Osterle *Lillian Rivers</p> <p>SISTER MARY VIVIAN STOUGHTON *Anne Malecke</p> <p>SUPERIOR *Mrs. J. Haasis</p> <p>THORP *Theodora R. Mc- Claren</p> <p>TIGERTON *Ella Brooks</p> <p>TOMAH *Harriet Le Fevre</p> <p>TURTLE LAKE *Mildred Becker</p> <p>WATERLOO Adele Doering</p> <p>WAUKESHA Blanche Willson</p> <p>WAUPACA *Marie Haebig</p> <p>WAUPUN *Ethel Jay Pinkerton</p> <p>WASCO *Mrs. Elmer Bandt *Marie Bennett</p> <p>WAUWATOSA *Mrs. L. J. Alberson *Louis L. Schroeder</p> <p>WESTFIELD *Dora E. Hill *Velma Richards *Marian Scheible</p> <p>WEST SALEM Bernice McDonald</p> <p>WEYAUWEGA Kurt Oswald</p> <p>WILSON *Mrs. George C. O'Keefe</p> <p>WISCONSIN RAPIDS *Mrs. L. G. Bynum *Fern Merritt</p> <p>WONEWOC *Fern Schroeder</p> <p>Wyoming</p> <p>NIAGARA *Ruth H. Anderson</p> <p>OSKOSH *Lula Blissett Lisk *Harriet Wilkins</p> <p>OSSEO Eleanor Piske</p> <p>OWEN *Mrs. A. M. Wilson</p> <p>OXFORD Isabel Franklin</p> <p>PESHTIGO Nelle B. Mellen</p> <p>PHILIPS *Eliza Lowe</p> <p>PLYMOUTH *Hildegard Wilson</p> <p>PRAIRIE DU SAC M. Rose Koch</p>
---	--	--	--	--	--

Branches Everywhere

The activities of the Sherwood Music School are world-wide in scope. The map below shows the number of its Chicago Branches and of its Extension Branches in various States, and lists the cities in which its Foreign Branches are located.

